

WORKSTATION BRIDGE CRANES



Cost-effective Solutions
For Lifting and Moving Material



T \ | a Q a • d a | A O E S a Z ~~~~~ f O { \ | a a • d a | B { A
V I | E ^ ^ A F E e H I H A W \ A A F I B I I B I I e A C e A A F I B I I B I I A

CEILING MOUNTED WORKSTATION BRIDGE CRANES

SPANCO Lifting Solutions...

*Increase worker productivity,
ease work flow and provide cost
effective materials handling—
this is what SPANCO lifting
solutions can do for you.*

*No matter the material handling
problem, SPANCO has a solution.*



Texas Valley, Texas • 800.368.7273 • www.spanco.com
Village Park, Illinois • 815.426.1111 • www.spanco.com
Atlanta, Georgia • 770.426.1111 • www.spanco.com
Phoenix, Arizona • 602.426.1111 • www.spanco.com
Dallas, Texas • 972.426.1111 • www.spanco.com
Houston, Texas • 281.426.1111 • www.spanco.com
Chicago, Illinois • 708.426.1111 • www.spanco.com
Denver, Colorado • 303.426.1111 • www.spanco.com
San Antonio, Texas • 214.426.1111 • www.spanco.com
Fort Worth, Texas • 817.426.1111 • www.spanco.com
Austin, Texas • 512.426.1111 • www.spanco.com
San Diego, California • 619.426.1111 • www.spanco.com
Los Angeles, California • 310.426.1111 • www.spanco.com
San Jose, California • 408.426.1111 • www.spanco.com
Seattle, Washington • 206.426.1111 • www.spanco.com
Portland, Oregon • 503.426.1111 • www.spanco.com
San Francisco, California • 415.426.1111 • www.spanco.com
New York, New York • 212.426.1111 • www.spanco.com
Boston, Massachusetts • 617.426.1111 • www.spanco.com
Washington, D.C. • 202.426.1111 • www.spanco.com
Miami, Florida • 305.426.1111 • www.spanco.com
Phoenix, Arizona • 602.426.1111 • www.spanco.com
Dallas, Texas • 972.426.1111 • www.spanco.com
Houston, Texas • 281.426.1111 • www.spanco.com
Chicago, Illinois • 708.426.1111 • www.spanco.com
Denver, Colorado • 303.426.1111 • www.spanco.com
San Antonio, Texas • 214.426.1111 • www.spanco.com
Fort Worth, Texas • 817.426.1111 • www.spanco.com
Austin, Texas • 512.426.1111 • www.spanco.com
San Diego, California • 619.426.1111 • www.spanco.com
Los Angeles, California • 310.426.1111 • www.spanco.com
San Jose, California • 408.426.1111 • www.spanco.com
Seattle, Washington • 206.426.1111 • www.spanco.com
Portland, Oregon • 503.426.1111 • www.spanco.com
San Francisco, California • 415.426.1111 • www.spanco.com
New York, New York • 212.426.1111 • www.spanco.com
Boston, Massachusetts • 617.426.1111 • www.spanco.com
Washington, D.C. • 202.426.1111 • www.spanco.com
Miami, Florida • 305.426.1111 • www.spanco.com

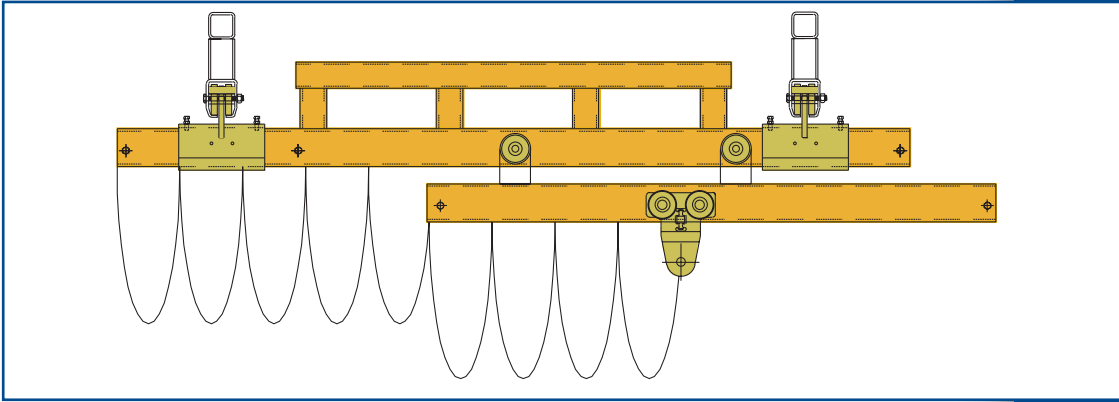
TABLE OF CONTENTS

	page
Solving Your Material Handling Problems...	3
Quality Considerations	3
Determining Capacity, Width, Length, and Height	4
Easy Installation and Modular Design	5
Design Factors	6
System Options	7
Components	9
Runway Support Systems	11
Overview for Specification Charts	13
Chart Diagrams	14
System Specifications	15
Dimensional Charts	16 - 24
Trussed Track 20' Support Centers/ Plain Track 6' Support Centers	16-20
Plain Track 9' Support Centers	19
Trussed Track 25' Support Centers	21-23
Trussed Track 30' Support Centers	23-24



In addition to providing solutions, we provide quality. Quality construction to ensure long life and easy, ergonomic service. Whether you need crane coverage for an area with minimal building support or coverage for a small workstation, SPANCO can provide an answer with our full lines of gantry cranes, jib cranes, and SPANCO enclosed track workstation bridge cranes.

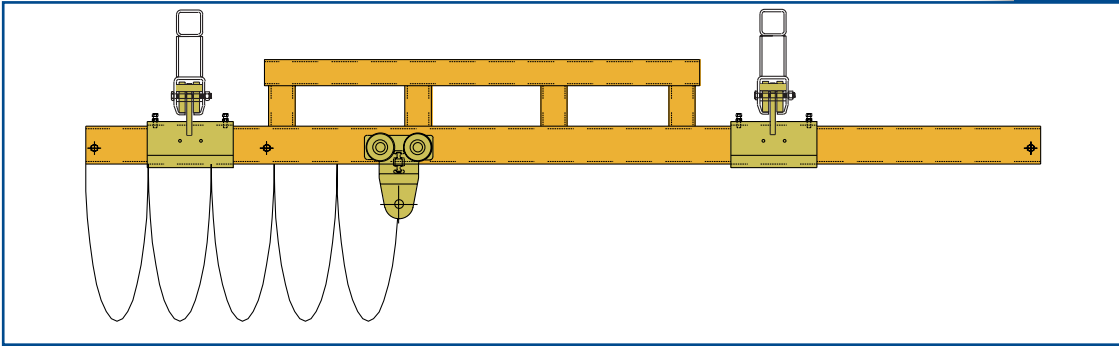




TELESCOPING
SYSTEM

Telescoping Bridges

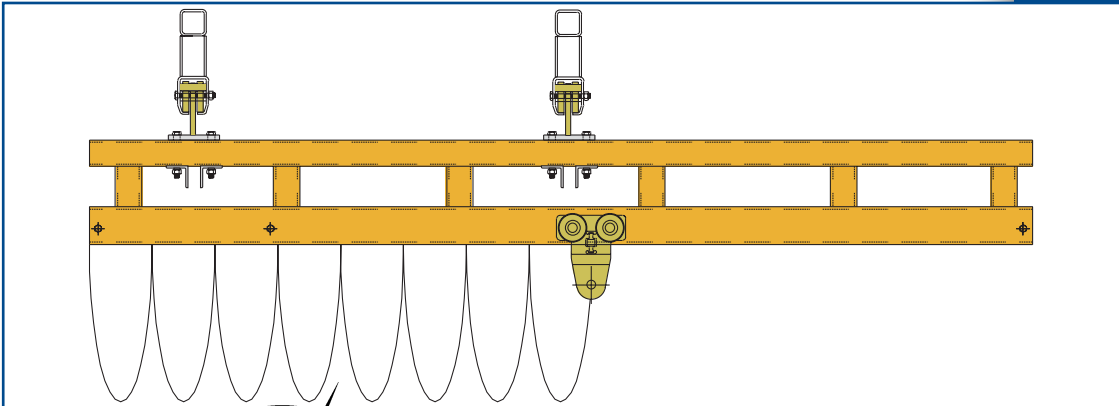
- Provide extended reach to areas beyond a column or under mezzanines or shelving; a neighboring workstation; or into a specific area or opening requiring coverage.
- Steel anti-kickup wheels prevent bridge binding, ensuring smooth movement.
- Range in capacities up to 2000 lb. For specific applications, consult factory for an engineered solution.



CANTILEVERED
SYSTEM

Cantilevered Bridges

- One or both ends of the crane bridge can be cantilevered beyond the standard 12 in. overhang in order to cover a wider area.
- For specific applications, consult factory for an engineered solution.



TRUSSED
CANTILEVERED
SYSTEM





5 HOIST TROLLEY

- Connection between lifting device and bridge.
- Fabricated from precision cut steel plate.
- Machined steel wheels ensure smooth movement.
- Trolleys are designed to ANSI B30.11 specifications for underhung bridge cranes.

6 CABLE/HOSE CLAMPS

- Fitted at one end of the runway and one end of the bridge.
- Utilized where power feed is required.

7 HANGER ASSEMBLY

- Standard tie rod support assembly. (See next page for more details.)

8 FLAT CABLE FESTOONING SYSTEMS

- (four wire)
- Supplied with all systems.
- Optional, various sized air hoses available.



6 CABLE/HOSE CLAMP



T | a | Q | a | • | d | a | A | O | E | S | c | a | E | A | w | w | w | . | c | o | m | a | a | • | d | a | B | { | Á | V | I | E | ^ | ^ | M | E | € | H | È | I | H | A | ^ | Á | F | I | È | Í | È | Í | € | M | O | c | A | M | O | c | A | M | O | c | A | M | O | c | A |

RUNWAY SUPPORT SYSTEMS

CEILING MOUNTED WORKSTATION BRIDGE

HANGER ASSEMBLY
Tie Rod Plain Track Runway



Tie Rod Hanger Assembly- Plain Track Runway

Standard hanger assembly for plain track systems. Includes:

- Adjustable roof beam clamp providing secure fit to beam. Flange widths range from 2 1/4 in. to 8 in.
- Standard 12 in. hanger rod. (Longer as required)
- Plain track support bracket.

HANGER ASSEMBLY
Tie Rod Trussed Track Runway



Tie Rod Hanger Assembly- Trussed Track Runway

Standard hanger assembly for trussed track systems. Includes:

- Adjustable beam clamp providing secure fit to beam. Flange widths range from 2 1/4 in. to 8 in.
- Standard 12 in. hanger rod. (Longer as required)
- Trussed track support bracket.

SPANCO recommends consulting a qualified professional architect or engineer in your local area to determine your building support adequacy. Considerations include your geographical region, snowfall, seismic loading, etc.

Sway Bracing

- Required on all tie rod supported systems to ensure maximum runway rigidity.
- Sway brace clip attaches to standard rod and track clamp. Fits 1 in. diameter, schedule 40 pipe at a 45° angle.
- 1 inch pipe supplied by others.



SWAY BRACING
(Pipe Clamp optional. Pipe supplied by others.)

Flush Clamp- Cross Mount

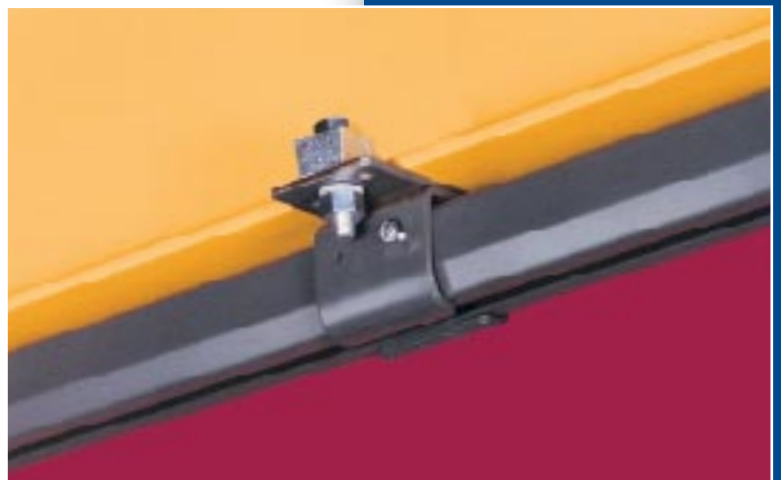
- Optional hanger assembly attaching plain track to support steel. Fabricated from structural plate equipped with Grade 5 bolts and beam clips. Can only be used with a plain track bridge.
- Care should be taken to ensure adequate bridge clearance.



FLUSH CLAMP
Cross Mount

Flush Clamp- Parallel Mount

- Optional hanger assembly attaching plain track to support steel. Fabricated from structural plate equipped with two Grade 5 bolts and beam clips.
- Care should be taken to ensure adequate bridge clearance.



FLUSH CLAMP Parallel Mount



CEILING MOUNTED WORKSTATION BRIDGE

SPECIFICATION CHARTS

SPANCO ceiling mounted bridge crane dimensional charts are organized according to the length of the maximum support centers for each runway. Generally, considering the following points is helpful for determining specific runway support centers:

- The size of the building or specific area requiring coverage: Will the system cover the full building perimeter or a smaller specific area within a building?
- Location of fixed structures such as machinery, building columns, overhead lighting, and fixtures.
- Specific logistics of the area requiring coverage: Is the system moving material to an assembly line, into storage, or from one workstation to another?

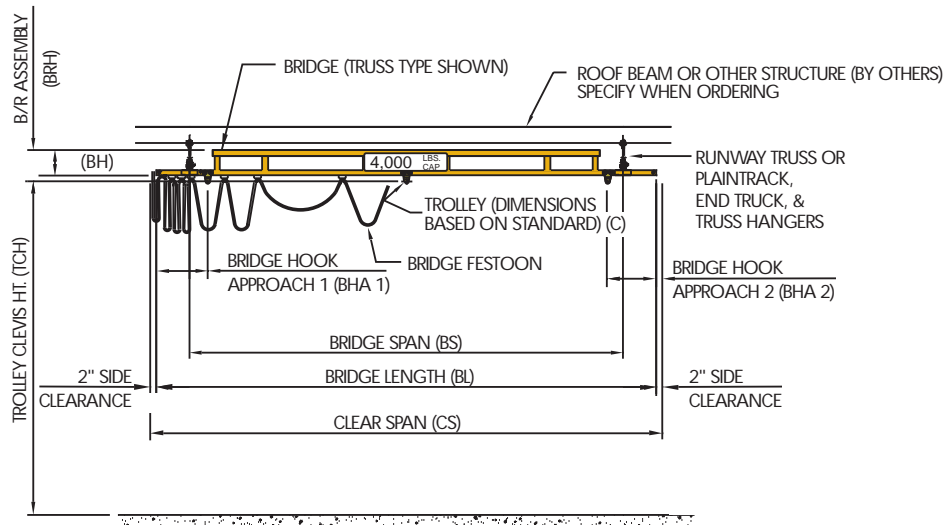
CONSIDERATIONS FOR PLAIN TRACK

- Maximum runway support centers are 6 feet for 400, 500, 600, and 900 series track. Support centers are 9 feet for 700 series track.
- Specific headroom requirements: Runways can be flush mounted to overhead building steel if conditions permit, allowing the lowest possible headroom constraint.

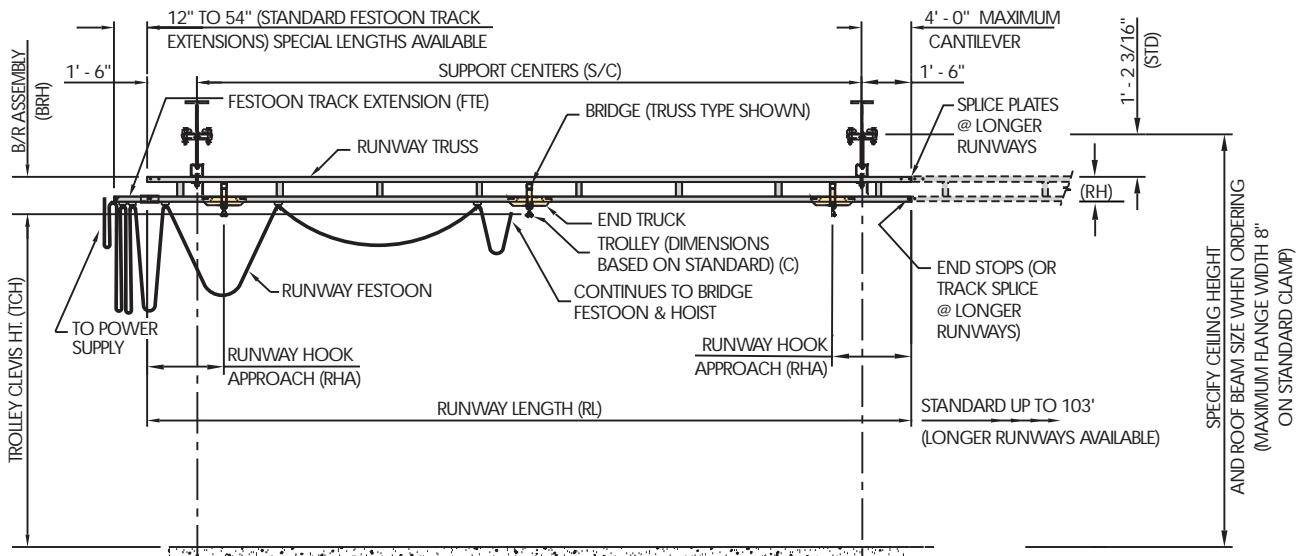
CONSIDERATIONS FOR TRUSSED TRACK

- Maximum runway support centers are 20, 25, and 30 feet.
- Specific headroom requirements: 20 ft. runway support centers allow for runway trusses with the shortest depth, maximizing headroom space under the hoist.

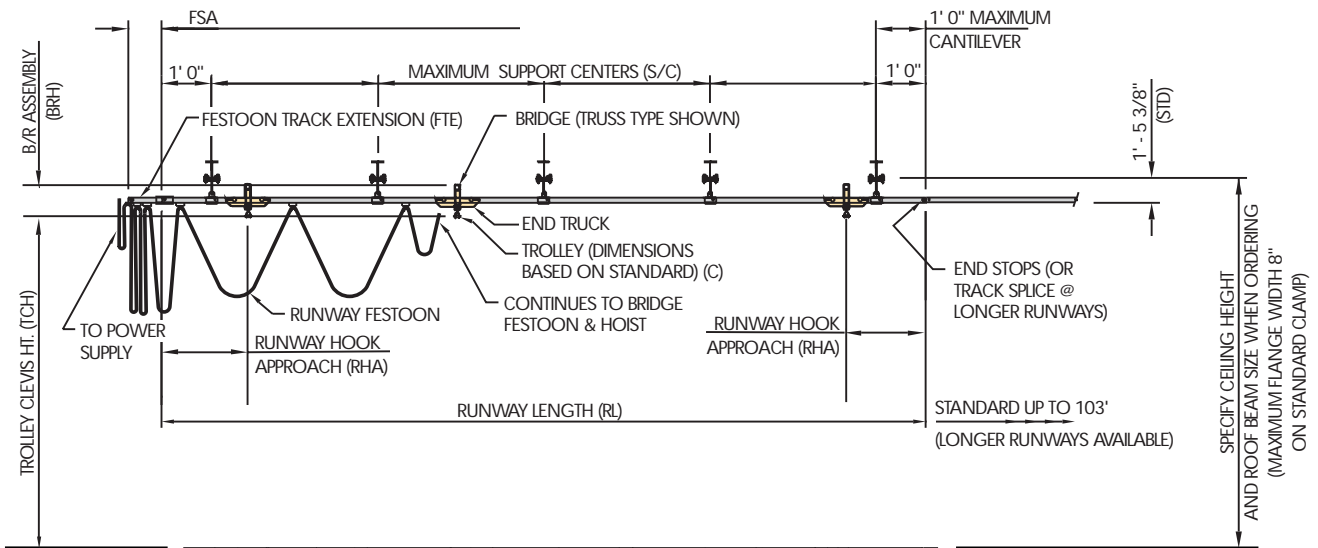




TRUSSED TRACK RUNWAY



PLAIN TRACK RUNWAY



CEILING MOUNTED WORKSTATION BRIDGE CRANES END APPROACH

HOOK APPROACH DATA																		
SYSTEM DATA	300 SERIES			400 SERIES			500 SERIES			600 SERIES			700 SERIES			900 SERIES		
	BRIDGE		RUNWAY	BRIDGE		RUNWAY	BRIDGE		RUNWAY	BRIDGE		RUNWAY	BRIDGE		RUNWAY	BRIDGE		RUNWAY
	BL	BHA1	BHA2	RHA	BHA1	BHA2	RHA	BHA1	BHA2	RHA	BHA1	BHA2	RHA	BHA1	BHA2	RHA	BHA1	BHA2
8'	8 1/8"	2 7/8"	8"	10 1/2"	3 1/4"	9 3/4"	18 5/8"	3 5/8"	10 5/16"	20"	4 1/8"	11 1/4"	22 1/8"	5 3/8"	13 7/16"	38 1/8"	21 3/8"	33 15/16"
10'	10 3/4"	2 7/8"	8"	14"	3 1/4"	9 3/4"	18 5/8"	3 5/8"	10 5/16"	20"	4 1/8"	11 1/4"	22 1/8"	5 3/8"	13 7/16"	38 1/8"	21 3/8"	33 15/16"
15'	13 3/8"	2 7/8"	8"	17 1/2"	3 1/4"	9 3/4"	18 5/8"	3 5/8"	10 5/16"	20"	4 1/8"	11 1/4"	22 1/8"	5 3/8"	13 7/16"	38 1/8"	21 3/8"	33 15/16"
20'	18 5/8"	2 7/8"	8"	24 1/2"	3 1/4"	9 3/4"	25 1/2"	3 5/8"	10 5/16"	25 7/8"	4 1/8"	11 1/4"	27"	5 3/8"	13 7/16"	43"	21 3/8"	33 15/16"
23'	N/A	N/A	N/A	28"	3 1/4"	9 3/4"	29"	3 5/8"	10 5/16"	29 3/8"	4 1/8"	11 1/4"	30 1/2"	5 3/8"	13 7/16"	46 1/2"	21 3/8"	33 15/16"
28'	N/A	N/A	N/A	31 1/2"	3 1/4"	19 5/16"	32 1/2"	3 5/8"	19 7/8"	32 7/8"	4 1/8"	20 3/4"	34"	5 3/8"	29 3/16"	50"	21 3/8"	33 15/16"
34'	N/A	N/A	N/A	N/A	N/A	N/A	43"	3 5/8"	19 7/8"	43 3/8"	4 1/8"	20 3/4"	44 1/2"	5 3/8"	29 3/16"	N/A	N/A	N/A

Applies to all runway lengths up to 103'

SYSTEM SPECIFICATIONS FOR CEILING MOUNTED KITS

SPANCO Ceiling Mounted Workstation Bridge Crane kits include:

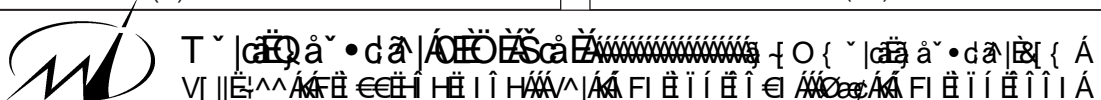
BRIDGE KITS

1. Plain bridge, tube reinforced bridge, or trussed bridge as required
2. Hoist trolley
3. Bridge end stops
4. Festoon cable with trolleys
5. End trucks

RUNWAY KITS

1. Hangers
 2. Runway end stops
 3. Festoon cable with trolleys
 4. Standard festoon track extension
 5. Plain or trussed runways
- Ceiling mounted system kits include appropriate number of hanger rods, hangers, adjustable beam clamps, and track support brackets.
 - Ceiling mounted system kits do not include hoist or required sway bracing.
 - All ceiling mounted systems must be properly braced to existing structure using proper sway bracing. To achieve desired rigidity for specific application, SPANCO recommends consulting a professional architect or engineer in your local area to satisfy all codes and ordinances.
 - Dimensions shown are approximate and subject to change without notice. All catalog dimensions are developed using standard components for the spans and capacities required. Substitution of optional trolleys or other components will affect certain dimensions. If specific clearances are required, specify at time of order.

SPANCO INC.		BRIDGE CRANE KITS & CEILING MOUNTED KITS
CUSTOMER:		STANDARD SUPPORT CENTERS (S/C):
TRACK SERIES:	CAPACITY:	RUNWAY SUPPORT CENTERS (S/C1):
NUMBER OF UNITS:		RUNWAY SUPPORT CENTERS (S/C2):
TROLLEY CLEVIS HT. (TCH):		RUNWAY SUPPORT CENTERS (S/C3):
CEILING HEIGHT:		RUNWAY SUPPORT CENTERS (S/C4):
BRIDGE / RUNWAY		RUNWAY SUPPORT CENTERS (S/C5):
MODEL NUMBER:		HANGER ROD LENGTH:
BRIDGE LENGTH (BL):		ELECTRICAL REQUIREMENTS:
CLEAR SPAN (CS):		FESTOON TRACK EXTENSION (FTE):
OVERALL RUNWAY LENGTH (RL):		FESTOON CABLE LENGTH (FCL):



TRUSSED TRACK RUNWAY SYSTEMS												PLAIN TRACK RUNWAY SYSTEMS								
SYSTEM DATA		MODEL NUMBER			BRIDGE/RUNWAY DATA				FESTOON DATA			MODEL NUMBER		BRIDGE/RUNWAY DATA						
BL	RL	CMT	BL	RL	TS	BRH	BH	C	RH	QTY	FTE	FCL	CMP	BL	RL	TS	BRH	BH	C	TH
8'	11'-6"	CMT-8-11.5-400	1'-1 5/8"	1 11/16"	2 1/4"	9"	4	12"	28'	CMP-8-11-400	3 15/16"	1 11/16"	2 1/4"	1 11/16"						
	23'	CMT-8-23-400	1'-1 5/8"	1 11/16"	2 1/4"	9"	5	12"	41'	CMP-8-23-400	3 15/16"	1 11/16"	2 1/4"	1 11/16"						
	33'	CMT-8-33-400	1'-1 5/8"	1 11/16"	2 1/4"	9"	7	24"	52'	CMP-8-33-400	3 15/16"	1 11/16"	2 1/4"	1 11/16"						
	43'	CMT-8-43-400	1'-1 5/8"	1 11/16"	2 1/4"	9"	9	24"	62'	CMP-8-43-400	3 15/16"	1 11/16"	2 1/4"	1 11/16"						
	53'	CMT-8-53-400	1'-1 5/8"	1 11/16"	2 1/4"	9"	10	36"	74'	CMP-8-53-400	3 15/16"	1 11/16"	2 1/4"	1 11/16"						
	63'	CMT-8-63-400	1'-1 5/8"	1 11/16"	2 1/4"	9"	12	36"	85'	CMP-8-63-400	3 15/16"	1 11/16"	2 1/4"	1 11/16"						
	83'	CMT-8-83-400	1'-1 5/8"	1 11/16"	2 1/4"	9"	15	54"	107'	CMP-8-83-400	3 15/16"	1 11/16"	2 1/4"	1 11/16"						
	103'	CMT-8-103-400	1'-1 5/8"	1 11/16"	2 1/4"	9"	19	54"	129'	CMP-8-103-400	3 15/16"	1 11/16"	2 1/4"	1 11/16"						
10'	11'-6"	CMT-10-11.5-400	1'-1 5/8"	3 11/16"	2 1/4"	9"	5	12"	30'	CMP-10-11-400	5 15/16"	3 11/16"	2 1/4"	1 11/16"						
	23'	CMT-10-23-400	1'-1 5/8"	3 11/16"	2 1/4"	9"	6	12"	43'	CMP-10-23-400	5 15/16"	3 11/16"	2 1/4"	1 11/16"						
	33'	CMT-10-33-400	1'-1 5/8"	3 11/16"	2 1/4"	9"	8	24"	54'	CMP-10-33-400	5 15/16"	3 11/16"	2 1/4"	1 11/16"						
	43'	CMT-10-43-400	1'-1 5/8"	3 11/16"	2 1/4"	9"	10	24"	64'	CMP-10-43-400	5 15/16"	3 11/16"	2 1/4"	1 11/16"						
	53'	CMT-10-53-400	1'-1 5/8"	3 11/16"	2 1/4"	9"	11	36"	76'	CMP-10-53-400	5 15/16"	3 11/16"	2 1/4"	1 11/16"						
	63'	CMT-10-63-400	1'-1 5/8"	3 11/16"	2 1/4"	9"	13	36"	87'	CMP-10-63-400	5 15/16"	3 11/16"	2 1/4"	1 11/16"						
	83'	CMT-10-83-400	1'-1 5/8"	3 11/16"	2 1/4"	9"	16	54"	109'	CMP-10-83-400	5 15/16"	3 11/16"	2 1/4"	1 11/16"						
	103'	CMT-10-103-400	1'-1 5/8"	3 11/16"	2 1/4"	9"	20	54"	131'	CMP-10-103-400	5 15/16"	3 11/16"	2 1/4"	1 11/16"						
15'	23'	CMT-15-23-400	1'-1 5/8"	9"	2 1/4"	9"	7	12"	49'	CMP-15-23-400	11 1/4"	9"	2 1/4"	1 11/16"						
	33'	CMT-15-33-400	1'-1 5/8"	9"	2 1/4"	9"	9	24"	60'	CMP-15-33-400	11 1/4"	9"	2 1/4"	1 11/16"						
	43'	CMT-15-43-400	1'-1 5/8"	9"	2 1/4"	9"	11	24"	70'	CMP-15-43-400	11 1/4"	9"	2 1/4"	1 11/16"						
	53'	CMT-15-53-400	1'-1 5/8"	9"	2 1/4"	9"	12	36"	82'	CMP-15-53-400	11 1/4"	9"	2 1/4"	1 11/16"						
	63'	CMT-15-63-400	1'-1 5/8"	9"	2 1/4"	9"	14	36"	93'	CMP-15-63-400	11 1/4"	9"	2 1/4"	1 11/16"						
	83'	CMT-15-83-400	1'-1 5/8"	9"	2 1/4"	9"	17	54"	115'	CMP-15-83-400	11 1/4"	9"	2 1/4"	1 11/16"						
	103'	CMT-15-103-400	1'-1 5/8"	9"	2 1/4"	9"	21	54"	137'	CMP-15-103-400	11 1/4"	9"	2 1/4"	1 11/16"						
	20'	23'	CMT-20-23-400	1'-1 5/8"	9"	2 1/4"	9"	9	12"	54'	CMP-20-23-400	11 1/4"	9"	2 1/4"	1 11/16"					
33'		CMT-20-33-400	1'-1 5/8"	9"	2 1/4"	9"	11	24"	65'	CMP-20-33-400	11 1/4"	9"	2 1/4"	1 11/16"						
43'		CMT-20-43-400	1'-1 5/8"	9"	2 1/4"	9"	13	24"	75'	CMP-20-43-400	11 1/4"	9"	2 1/4"	1 11/16"						
53'		CMT-20-53-400	1'-1 5/8"	9"	2 1/4"	9"	14	36"	87'	CMP-20-53-400	11 1/4"	9"	2 1/4"	1 11/16"						
63'		CMT-20-63-400	1'-1 5/8"	9"	2 1/4"	9"	16	36"	98'	CMP-20-63-400	11 1/4"	9"	2 1/4"	1 11/16"						
83'		CMT-20-83-400	1'-1 5/8"	9"	2 1/4"	9"	19	54"	120'	CMP-20-83-400	11 1/4"	9"	2 1/4"	1 11/16"						
103'		CMT-20-103-400	1'-1 5/8"	9"	2 1/4"	9"	23	54"	142'	CMP-20-103-400	11 1/4"	9"	2 1/4"	1 11/16"						
23'		23'	CMT-23-23-400	1'-1 5/8"	9"	2 1/4"	9"	10	12"	58'	CMP-23-23-400	11 1/4"	9"	2 1/4"	1 11/16"					
	33'	CMT-23-33-400	1'-1 5/8"	9"	2 1/4"	9"	12	24"	69'	CMP-23-33-400	11 1/4"	9"	2 1/4"	1 11/16"						
	43'	CMT-23-43-400	1'-1 5/8"	9"	2 1/4"	9"	14	24"	79'	CMP-23-43-400	11 1/4"	9"	2 1/4"	1 11/16"						
	53'	CMT-23-53-400	1'-1 5/8"	9"	2 1/4"	9"	15	36"	91'	CMP-23-53-400	11 1/4"	9"	2 1/4"	1 11/16"						
	63'	CMT-23-63-400	1'-1 5/8"	9"	2 1/4"	9"	17	36"	102'	CMP-23-63-400	11 1/4"	9"	2 1/4"	1 11/16"						
	83'	CMT-23-83-400	1'-1 5/8"	9"	2 1/4"	9"	20	54"	124'	CMP-23-83-400	11 1/4"	9"	2 1/4"	1 11/16"						
	103'	CMT-23-103-400	1'-1 5/8"	9"	2 1/4"	9"	24	54"	146'	CMP-23-103-400	11 1/4"	9"	2 1/4"	1 11/16"						
	28'	23'	CMT-28-23-400	1'-3 9/16"	11"	2 1/4"	9"	11	12"	63'	CMP-28-23-400	1'-1 1/4"	11"	2 1/4"	1 11/16"					
33'		CMT-28-33-400	1'-3 9/16"	11"	2 1/4"	9"	13	24"	74'	CMP-28-33-400	1'-1 1/4"	11"	2 1/4"	1 11/16"						
43'		CMT-28-43-400	1'-3 9/16"	11"	2 1/4"	9"	15	24"	85'	CMP-28-43-400	1'-1 1/4"	11"	2 1/4"	1 11/16"						
53'		CMT-28-53-400	1'-3 9/16"	11"	2 1/4"	9"	16	36"	96'	CMP-28-53-400	1'-1 1/4"	11"	2 1/4"	1 11/16"						
63'		CMT-28-63-400	1'-3 9/16"	11"	2 1/4"	9"	18	36"	107'	CMP-28-63-400	1'-1 1/4"	11"	2 1/4"	1 11/16"						
83'		CMT-28-83-400	1'-3 9/16"	11"	2 1/4"	9"	21	54"	129'	CMP-28-83-400	1'-1 1/4"	11"	2 1/4"	1 11/16"						
103'		CMT-28-103-400	1'-3 9/16"	11"	2 1/4"	9"	25	54"	151'	CMP-28-103-400	1'-1 1/4"	11"	2 1/4"	1 11/16"						

← 20' 0" MAX. SUPPORT CENTERS → ← 6' 0" MAX. SUPPORT CENTERS →

6'-0" / 20' - 0" MAXIMUM SUPPORT CENTERS
250 LB. CAPACITY
8' - 10' - 15' - 20' - 23' - 28' BRIDGE LENGTH



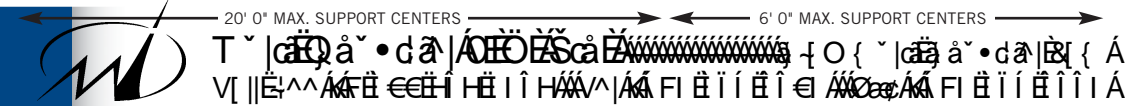
T | ca | a | • | ca | / | O | E | S | ca | E | | O | { | | ca | a | • | ca | E | { | A |
V | || E | ^ | A | E | € | H | E | I | H | A | / | A | F | E | I | E | I | € | M | ca | A | F | E | I | E | I | A

6' - 0" / 20' - 0" MAXIMUM SUPPORT CENTERS

500 LB. CAPACITY

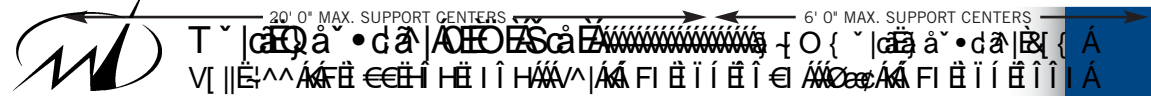
8' - 10' - 15' - 20' - 23' - 28' - 34' BRIDGE LENGTH

TRUSSED TRACK RUNWAY SYSTEMS											PLAIN TRACK RUNWAY SYSTEMS									
SYSTEM DATA		MODEL NUMBER			BRIDGE/RUNWAY DATA			FESTOON DATA			MODEL NUMBER		BRIDGE/RUNWAY DATA							
BL	RL	CMT	BL	RL	TS	BRH	BH	C	RH	QTY	FTE	FCL	CMP	BL	RL	TS	BRH	BH	C	TH
8'	11'-6"	CMT-8-11.5-500	1'-4 3/16"	2 3/8"	2 5/8"	10"	4	12"	28'	CMP-8-11-500	8 9/16"	2 3/8"	2 5/8"	2 3/8"						
	23'	CMT-8-23-500	1'-4 3/16"	2 3/8"	2 5/8"	10"	5	12"	41'	CMP-8-23-500	8 9/16"	2 3/8"	2 5/8"	2 3/8"						
	33'	CMT-8-33-500	1'-4 3/16"	2 3/8"	2 5/8"	10"	7	24"	52'	CMP-8-33-500	8 9/16"	2 3/8"	2 5/8"	2 3/8"						
	43'	CMT-8-43-500	1'-4 3/16"	2 3/8"	2 5/8"	10"	9	24"	62'	CMP-8-43-500	8 9/16"	2 3/8"	2 5/8"	2 3/8"						
	53'	CMT-8-53-500	1'-4 3/16"	2 3/8"	2 5/8"	10"	10	36"	74'	CMP-8-53-500	8 9/16"	2 3/8"	2 5/8"	2 3/8"						
	63'	CMT-8-63-500	1'-4 3/16"	2 3/8"	2 5/8"	10"	12	36"	85'	CMP-8-63-500	8 9/16"	2 3/8"	2 5/8"	2 3/8"						
	83'	CMT-8-83-500	1'-4 3/16"	2 3/8"	2 5/8"	10"	15	54"	107'	CMP-8-83-500	8 9/16"	2 3/8"	2 5/8"	2 3/8"						
103'	CMT-8-103-500	1'-4 3/16"	2 3/8"	2 5/8"	10"	19	54"	129'	CMP-8-103-500	8 9/16"	2 3/8"	2 5/8"	2 3/8"							
10'	11'-6"	CMT-10-11.5-500	1'-4 3/16"	6 3/8"	2 5/8"	10"	5	12"	30'	CMP-10-11-500	9"	6 3/8"	2 5/8"	2 3/8"						
	23'	CMT-10-23-500	1'-4 3/16"	6 3/8"	2 5/8"	10"	6	12"	43'	CMP-10-23-500	9"	6 3/8"	2 5/8"	2 3/8"						
	33'	CMT-10-33-500	1'-4 3/16"	6 3/8"	2 5/8"	10"	8	24"	54'	CMP-10-33-500	9"	6 3/8"	2 5/8"	2 3/8"						
	43'	CMT-10-43-500	1'-4 3/16"	6 3/8"	2 5/8"	10"	10	24"	64'	CMP-10-43-500	9"	6 3/8"	2 5/8"	2 3/8"						
	53'	CMT-10-53-500	1'-4 3/16"	6 3/8"	2 5/8"	10"	11	36"	76'	CMP-10-53-500	9"	6 3/8"	2 5/8"	2 3/8"						
	63'	CMT-10-63-500	1'-4 3/16"	6 3/8"	2 5/8"	10"	13	36"	87'	CMP-10-63-500	9"	6 3/8"	2 5/8"	2 3/8"						
	83'	CMT-10-83-500	1'-4 3/16"	6 3/8"	2 5/8"	10"	16	54"	109'	CMP-10-83-500	9"	6 3/8"	2 5/8"	2 3/8"						
103'	CMT-10-103-500	1'-4 3/16"	6 3/8"	2 5/8"	10"	20	54"	131'	CMP-10-103-500	9"	6 3/8"	2 5/8"	2 3/8"							
15'	23'	CMT-15-23-500	1'-4 3/16"	10"	2 5/8"	10"	7	12"	49'	CMP-15-23-500	1'-0 5/8"	10"	2 5/8"	2 3/8"						
	33'	CMT-15-33-500	1'-4 3/16"	10"	2 5/8"	10"	9	24"	60'	CMP-15-33-500	1'-0 5/8"	10"	2 5/8"	2 3/8"						
	43'	CMT-15-43-500	1'-4 3/16"	10"	2 5/8"	10"	11	24"	70'	CMP-15-43-500	1'-0 5/8"	10"	2 5/8"	2 3/8"						
	53'	CMT-15-53-500	1'-4 3/16"	10"	2 5/8"	10"	12	36"	82'	CMP-15-53-500	1'-0 5/8"	10"	2 5/8"	2 3/8"						
	63'	CMT-15-63-500	1'-4 3/16"	10"	2 5/8"	10"	14	36"	93'	CMP-15-63-500	1'-0 5/8"	10"	2 5/8"	2 3/8"						
	83'	CMT-15-83-500	1'-4 3/16"	10"	2 5/8"	10"	17	54"	115'	CMP-15-83-500	1'-0 5/8"	10"	2 5/8"	2 3/8"						
103'	CMT-15-103-500	1'-4 3/16"	10"	2 5/8"	10"	21	54"	137'	CMP-15-103-500	1'-0 5/8"	10"	2 5/8"	2 3/8"							
20'	23'	CMT-20-23-500	1'-4 3/16"	10"	2 5/8"	10"	9	12"	54'	CMP-20-23-500	1'-0 5/8"	10"	2 5/8"	2 3/8"						
	33'	CMT-20-33-500	1'-4 3/16"	10"	2 5/8"	10"	11	24"	65'	CMP-20-33-500	1'-0 5/8"	10"	2 5/8"	2 3/8"						
	43'	CMT-20-43-500	1'-4 3/16"	10"	2 5/8"	10"	13	24"	75'	CMP-20-43-500	1'-0 5/8"	10"	2 5/8"	2 3/8"						
	53'	CMT-20-53-500	1'-4 3/16"	10"	2 5/8"	10"	14	36"	87'	CMP-20-53-500	1'-0 5/8"	10"	2 5/8"	2 3/8"						
	63'	CMT-20-63-500	1'-4 3/16"	10"	2 5/8"	10"	16	36"	98'	CMP-20-63-500	1'-0 5/8"	10"	2 5/8"	2 3/8"						
	83'	CMT-20-83-500	1'-4 3/16"	10"	2 5/8"	10"	19	54"	120'	CMP-20-83-500	1'-0 5/8"	10"	2 5/8"	2 3/8"						
103'	CMT-20-103-500	1'-4 3/16"	10"	2 5/8"	10"	23	54"	142'	CMP-20-103-500	1'-0 5/8"	10"	2 5/8"	2 3/8"							
23'	23'	CMT-23-23-500	1'-4 3/16"	10"	2 5/8"	10"	10	12"	58'	CMP-23-23-500	1'-0 5/8"	10"	2 5/8"	2 3/8"						
	33'	CMT-23-33-500	1'-4 3/16"	10"	2 5/8"	10"	12	24"	69'	CMP-23-33-500	1'-0 5/8"	10"	2 5/8"	2 3/8"						
	43'	CMT-23-43-500	1'-4 3/16"	10"	2 5/8"	10"	14	24"	79'	CMP-23-43-500	1'-0 5/8"	10"	2 5/8"	2 3/8"						
	53'	CMT-23-53-500	1'-4 3/16"	10"	2 5/8"	10"	15	36"	91'	CMP-23-53-500	1'-0 5/8"	10"	2 5/8"	2 3/8"						
	63'	CMT-23-63-500	1'-4 3/16"	10"	2 5/8"	10"	17	36"	102'	CMP-23-63-500	1'-0 5/8"	10"	2 5/8"	2 3/8"						
	83'	CMT-23-83-500	1'-4 3/16"	10"	2 5/8"	10"	20	54"	124'	CMP-23-83-500	1'-0 5/8"	10"	2 5/8"	2 3/8"						
103'	CMT-23-103-500	1'-4 3/16"	10"	2 5/8"	10"	24	54"	146'	CMP-23-103-500	1'-0 5/8"	10"	2 5/8"	2 3/8"							
28'	23'	CMT-28-23-500	1'-6"	1'-0 3/8"	2 5/8"	10"	11	12"	63'	CMP-28-23-500	1'-3"	1'-0 3/8"	2 5/8"	2 3/8"						
	33'	CMT-28-33-500	1'-6"	1'-0 3/8"	2 5/8"	10"	13	24"	74'	CMP-28-33-500	1'-3"	1'-0 3/8"	2 5/8"	2 3/8"						
	43'	CMT-28-43-500	1'-6"	1'-0 3/8"	2 5/8"	10"	15	24"	85'	CMP-28-43-500	1'-3"	1'-0 3/8"	2 5/8"	2 3/8"						
	53'	CMT-28-53-500	1'-6"	1'-0 3/8"	2 5/8"	10"	16	36"	96'	CMP-28-53-500	1'-3"	1'-0 3/8"	2 5/8"	2 3/8"						
	63'	CMT-28-63-500	1'-6"	1'-0 3/8"	2 5/8"	10"	18	36"	107'	CMP-28-63-500	1'-3"	1'-0 3/8"	2 5/8"	2 3/8"						
	83'	CMT-28-83-500	1'-6"	1'-0 3/8"	2 5/8"	10"	21	54"	129'	CMP-28-83-500	1'-3"	1'-0 3/8"	2 5/8"	2 3/8"						
103'	CMT-28-103-500	1'-6"	1'-0 3/8"	2 5/8"	10"	25	54"	151'	CMP-28-103-500	1'-3"	1'-0 3/8"	2 5/8"	2 3/8"							
34'	23'	CMT-34-23-500	1'-8 3/8"	1'-2 3/8"	2 5/8"	1'-0 3/8"	14	12"	70'	CMP-34-23-500	1'-5"	1'-2 3/8"	2 5/8"	2 3/8"						
	33'	CMT-34-33-500	1'-8 3/8"	1'-2 3/8"	2 5/8"	1'-0 3/8"	16	24"	81'	CMP-34-33-500	1'-5"	1'-2 3/8"	2 5/8"	2 3/8"						
	43'	CMT-34-43-500	1'-8 3/8"	1'-2 3/8"	2 5/8"	1'-0 3/8"	18	24"	91'	CMP-34-43-500	1'-5"	1'-2 3/8"	2 5/8"	2 3/8"						
	53'	CMT-34-53-500	1'-8 3/8"	1'-2 3/8"	2 5/8"	1'-0 3/8"	19	36"	103'	CMP-34-53-500	1'-5"	1'-2 3/8"	2 5/8"	2 3/8"						
	63'	CMT-34-63-500	1'-8 3/8"	1'-2 3/8"	2 5/8"	1'-0 3/8"	21	36"	114'	CMP-34-63-500	1'-5"	1'-2 3/8"	2 5/8"	2 3/8"						
	83'	CMT-34-83-500	1'-8 3/8"	1'-2 3/8"	2 5/8"	1'-0 3/8"	24	54"	136'	CMP-34-83-500	1'-5"	1'-2 3/8"	2 5/8"	2 3/8"						
103'	CMT-34-103-500	1'-8 3/8"	1'-2 3/8"	2 5/8"	1'-0 3/8"	28	54"	158'	CMP-34-103-500	1'-5"	1'-2 3/8"	2 5/8"	2 3/8"							



TRUSSED TRACK RUNWAY SYSTEMS											PLAIN TRACK RUNWAY SYSTEMS						
SYSTEM DATA		MODEL NUMBER	BRIDGE/RUNWAY DATA				FESTOON DATA				MODEL NUMBER		BRIDGE/RUNWAY DATA				
BL	RL	CMT BL RL TS	BRH	BH	C	RH	QTY	FTE	FCL	CMP BL RL TS	BRH	BH	C	TH			
8'	11'-6"	CMT-8-11.5-600	1'-6 1/4"	2 15/16"	3 1/16"	11"	4	12"	28'	CMP-8-11-600	10 3/16"	2 15/16"	3 1/16"	2 15/16"			
	23'	CMT-8-23-600	1'-6 1/4"	2 15/16"	3 1/16"	11"	5	12"	41'	CMP-8-23-600	10 3/16"	2 15/16"	3 1/16"	2 15/16"			
	33'	CMT-8-33-600	1'-6 1/4"	2 15/16"	3 1/16"	11"	7	24"	52'	CMP-8-33-600	10 3/16"	2 15/16"	3 1/16"	2 15/16"			
	43'	CMT-8-43-600	1'-6 1/4"	2 15/16"	3 1/16"	11"	9	24"	62'	CMP-8-43-600	10 3/16"	2 15/16"	3 1/16"	2 15/16"			
	53'	CMT-8-53-600	1'-6 1/4"	2 15/16"	3 1/16"	11"	10	36"	74'	CMP-8-53-600	10 3/16"	2 15/16"	3 1/16"	2 15/16"			
	63'	CMT-8-63-600	1'-6 1/4"	2 15/16"	3 1/16"	11"	12	36"	85'	CMP-8-63-600	10 3/16"	2 15/16"	3 1/16"	2 15/16"			
	83'	CMT-8-83-600	1'-6 1/4"	2 15/16"	3 1/16"	11"	15	54"	107'	CMP-8-83-600	10 3/16"	2 15/16"	3 1/16"	2 15/16"			
103'	CMT-8-103-600	1'-6 1/4"	2 15/16"	3 1/16"	11"	19	54"	129'	CMP-8-103-600	10 3/16"	2 15/16"	3 1/16"	2 15/16"				
10'	11'-6"	CMT-10-11.5-600	1'-6 1/4"	5 15/16"	3 1/16"	11"	5	12"	30'	CMP-10-11-600	10 3/16"	5 15/16"	3 1/16"	2 15/16"			
	23'	CMT-10-23-600	1'-6 1/4"	5 15/16"	3 1/16"	11"	6	12"	43'	CMP-10-23-600	10 3/16"	5 15/16"	3 1/16"	2 15/16"			
	33'	CMT-10-33-600	1'-6 1/4"	5 15/16"	3 1/16"	11"	8	24"	54'	CMP-10-33-600	10 3/16"	5 15/16"	3 1/16"	2 15/16"			
	43'	CMT-10-43-600	1'-6 1/4"	5 15/16"	3 1/16"	11"	10	24"	64'	CMP-10-43-600	10 3/16"	5 15/16"	3 1/16"	2 15/16"			
	53'	CMT-10-53-600	1'-6 1/4"	5 15/16"	3 1/16"	11"	11	36"	76'	CMP-10-53-600	10 3/16"	5 15/16"	3 1/16"	2 15/16"			
	63'	CMT-10-63-600	1'-6 1/4"	5 15/16"	3 1/16"	11"	13	36"	87'	CMP-10-63-600	10 3/16"	5 15/16"	3 1/16"	2 15/16"			
	83'	CMT-10-83-600	1'-6 1/4"	5 15/16"	3 1/16"	11"	16	54"	109'	CMP-10-83-600	10 3/16"	5 15/16"	3 1/16"	2 15/16"			
103'	CMT-10-103-600	1'-6 1/4"	5 15/16"	3 1/16"	11"	20	54"	131'	CMP-10-103-600	10 3/16"	5 15/16"	3 1/16"	2 15/16"				
15'	23'	CMT-15-23-600	1'-6 1/4"	11"	3 1/16"	11"	7	12"	49'	CMP-15-23-600	1'-2 1/16"	11"	3 1/16"	2 15/16"			
	33'	CMT-15-33-600	1'-6 1/4"	11"	3 1/16"	11"	9	24"	60'	CMP-15-33-600	1'-2 1/16"	11"	3 1/16"	2 15/16"			
	43'	CMT-15-43-600	1'-6 1/4"	11"	3 1/16"	11"	11	24"	70'	CMP-15-43-600	1'-2 1/16"	11"	3 1/16"	2 15/16"			
	53'	CMT-15-53-600	1'-6 1/4"	11"	3 1/16"	11"	12	36"	82'	CMP-15-53-600	1'-2 1/16"	11"	3 1/16"	2 15/16"			
	63'	CMT-15-63-600	1'-6 1/4"	11"	3 1/16"	11"	14	36"	93'	CMP-15-63-600	1'-2 1/16"	11"	3 1/16"	2 15/16"			
	83'	CMT-15-83-600	1'-6 1/4"	11"	3 1/16"	11"	17	54"	115'	CMP-15-83-600	1'-2 1/16"	11"	3 1/16"	2 15/16"			
103'	CMT-15-103-600	1'-6 1/4"	11"	3 1/16"	11"	21	54"	137'	CMP-15-103-600	1'-2 1/16"	11"	3 1/16"	2 15/16"				
20'	23'	CMT-20-23-600	1'-6 1/4"	11"	3 1/16"	11"	9	12"	54'	CMP-20-23-600	1'-2 1/16"	11"	3 1/16"	2 15/16"			
	33'	CMT-20-33-600	1'-6 1/4"	11"	3 1/16"	11"	11	24"	65'	CMP-20-33-600	1'-2 1/16"	11"	3 1/16"	2 15/16"			
	43'	CMT-20-43-600	1'-6 1/4"	11"	3 1/16"	11"	13	24"	75'	CMP-20-43-600	1'-2 1/16"	11"	3 1/16"	2 15/16"			
	53'	CMT-20-53-600	1'-6 1/4"	11"	3 1/16"	11"	14	36"	87'	CMP-20-53-600	1'-2 1/16"	11"	3 1/16"	2 15/16"			
	63'	CMT-20-63-600	1'-6 1/4"	11"	3 1/16"	11"	16	36"	98'	CMP-20-63-600	1'-2 1/16"	11"	3 1/16"	2 15/16"			
	83'	CMT-20-83-600	1'-6 1/4"	11"	3 1/16"	11"	19	54"	120'	CMP-20-83-600	1'-2 1/16"	11"	3 1/16"	2 15/16"			
103'	CMT-20-103-600	1'-6 1/4"	11"	3 1/16"	11"	23	54"	142'	CMP-20-103-600	1'-2 1/16"	11"	3 1/16"	2 15/16"				
23'	23'	CMT-23-23-600	1'-6 1/4"	11"	3 1/16"	11"	10	12"	58'	CMP-23-23-600	1'-2 1/16"	11"	3 1/16"	2 15/16"			
	33'	CMT-23-33-600	1'-6 1/4"	11"	3 1/16"	11"	12	24"	69'	CMP-23-33-600	1'-2 1/16"	11"	3 1/16"	2 15/16"			
	43'	CMT-23-43-600	1'-6 1/4"	11"	3 1/16"	11"	14	24"	79'	CMP-23-43-600	1'-2 1/16"	11"	3 1/16"	2 15/16"			
	53'	CMT-23-53-600	1'-6 1/4"	11"	3 1/16"	11"	15	36"	91'	CMP-23-53-600	1'-2 1/16"	11"	3 1/16"	2 15/16"			
	63'	CMT-23-63-600	1'-6 1/4"	11"	3 1/16"	11"	17	36"	102'	CMP-23-63-600	1'-2 1/16"	11"	3 1/16"	2 15/16"			
	83'	CMT-23-83-600	1'-6 1/4"	11"	3 1/16"	11"	20	54"	124'	CMP-23-83-600	1'-2 1/16"	11"	3 1/16"	2 15/16"			
103'	CMT-23-103-600	1'-6 1/4"	11"	3 1/16"	11"	24	54"	146'	CMP-23-103-600	1'-2 1/16"	11"	3 1/16"	2 15/16"				
28'	23'	CMT-28-23-600	1'-8 1/8"	1'-1 7/8"	3 1/16"	11"	11	12"	63'	CMP-28-23-600	1'-4 15/16"	1'-1 7/8"	3 1/16"	2 15/16"			
	33'	CMT-28-33-600	1'-8 1/8"	1'-1 7/8"	3 1/16"	11"	13	24"	74'	CMP-28-33-600	1'-4 15/16"	1'-1 7/8"	3 1/16"	2 15/16"			
	43'	CMT-28-43-600	1'-8 1/8"	1'-1 7/8"	3 1/16"	11"	15	24"	85'	CMP-28-43-600	1'-4 15/16"	1'-1 7/8"	3 1/16"	2 15/16"			
	53'	CMT-28-53-600	1'-8 1/8"	1'-1 7/8"	3 1/16"	11"	16	36"	96'	CMP-28-53-600	1'-4 15/16"	1'-1 7/8"	3 1/16"	2 15/16"			
	63'	CMT-28-63-600	1'-8 1/8"	1'-1 7/8"	3 1/16"	11"	18	36"	107'	CMP-28-63-600	1'-4 15/16"	1'-1 7/8"	3 1/16"	2 15/16"			
	83'	CMT-28-83-600	1'-8 1/8"	1'-1 7/8"	3 1/16"	11"	21	54"	129'	CMP-28-83-600	1'-4 15/16"	1'-1 7/8"	3 1/16"	2 15/16"			
103'	CMT-28-103-600	1'-8 1/8"	1'-1 7/8"	3 1/16"	11"	25	54"	151'	CMP-28-103-600	1'-4 15/16"	1'-1 7/8"	3 1/16"	2 15/16"				
34'	23'	CMT-34-23-600	1'-11"	1'-5"	3 1/16"	1'-1 7/8"	14	12"	70'	CMP-34-23-600	1'-8 1/16"	1'-5"	3 1/16"	2 15/16"			
	33'	CMT-34-33-600	1'-11"	1'-5"	3 1/16"	1'-1 7/8"	16	24"	81'	CMP-34-33-600	1'-8 1/16"	1'-5"	3 1/16"	2 15/16"			
	43'	CMT-34-43-600	1'-11"	1'-5"	3 1/16"	1'-1 7/8"	18	24"	91'	CMP-34-43-600	1'-8 1/16"	1'-5"	3 1/16"	2 15/16"			
	53'	CMT-34-53-600	1'-11"	1'-5"	3 1/16"	1'-1 7/8"	19	36"	103'	CMP-34-53-600	1'-8 1/16"	1'-5"	3 1/16"	2 15/16"			
	63'	CMT-34-63-600	1'-11"	1'-5"	3 1/16"	1'-1 7/8"	21	36"	114'	CMP-34-63-600	1'-8 1/16"	1'-5"	3 1/16"	2 15/16"			
	83'	CMT-34-83-600	1'-11"	1'-5"	3 1/16"	1'-1 7/8"	24	54"	136'	CMP-34-83-600	1'-8 1/16"	1'-5"	3 1/16"	2 15/16"			
103'	CMT-34-103-600	1'-11"	1'-5"	3 1/16"	1'-1 7/8"	28	54"	158'	CMP-34-103-600	1'-8 1/16"	1'-5"	3 1/16"	2 15/16"				

6'-0" / 20'-0" MAXIMUM SUPPORT CENTERS
 1,000 LB. CAPACITY
 8' - 10' - 15' - 20' - 23' - 28' - 34' BRIDGE LENGTH



9'-0" / 20'-0" MAXIMUM SUPPORT CENTERS

2,000 LB. CAPACITY

23' - 28' - 34' BRIDGE LENGTH

TRUSSED TRACK RUNWAY SYSTEMS											PLAIN TRACK RUNWAY SYSTEMS									
SYSTEM DATA		MODEL NUMBER			BRIDGE/RUNWAY DATA				FESTOON DATA			MODEL NUMBER		BRIDGE/RUNWAY DATA						
BL	RL	CMT	BL	RL	TS	BRH	BH	C	RH	QTY	FTE	FCL	CMP	BL	RL	TS	BRH	BH	C	TH
8'	11'-6"	CMT-8-11.5-700	1'-9 3/4"	4 5/16"	4 1/8"	1'-0"	4	12"	28"	CMP-8-11-700	1'-2 1/16"	4 5/16"	4 1/8"	4 5/16"						
	23'	CMT-8-23-700	1'-9 3/4"	4 5/16"	4 1/8"	1'-0"	5	12"	41"	CMP-8-23-700	1'-2 1/16"	4 5/16"	4 1/8"	4 5/16"						
	33'	CMT-8-33-700	1'-9 3/4"	4 5/16"	4 1/8"	1'-0"	7	24"	52"	CMP-8-33-700	1'-2 1/16"	4 5/16"	4 1/8"	4 5/16"						
	43'	CMT-8-43-700	1'-9 3/4"	4 5/16"	4 1/8"	1'-0"	9	24"	62"	CMP-8-43-700	1'-2 1/16"	4 5/16"	4 1/8"	4 5/16"						
	53'	CMT-8-53-700	1'-9 3/4"	4 5/16"	4 1/8"	1'-0"	10	36"	74"	CMP-8-53-700	1'-2 1/16"	4 5/16"	4 1/8"	4 5/16"						
	63'	CMT-8-63-700	1'-9 3/4"	4 5/16"	4 1/8"	1'-0"	12	36"	85"	CMP-8-63-700	1'-2 1/16"	4 5/16"	4 1/8"	4 5/16"						
	83'	CMT-8-83-700	1'-9 3/4"	4 5/16"	4 1/8"	1'-0"	15	54"	107"	CMP-8-83-700	1'-2 1/16"	4 5/16"	4 1/8"	4 5/16"						
	103'	CMT-8-103-700	1'-9 3/4"	4 5/16"	4 1/8"	1'-0"	19	54"	129"	CMP-8-103-700	1'-2 1/16"	4 5/16"	4 1/8"	4 5/16"						
10'	11'-6"	CMT-10-11.5-700	1'-9 3/4"	4 5/16"	4 1/8"	1'-0"	5	12"	30"	CMP-10-11-700	1'-2 1/16"	4 5/16"	4 1/8"	4 5/16"						
	23'	CMT-10-23-700	1'-9 3/4"	4 5/16"	4 1/8"	1'-0"	6	12"	43"	CMP-10-23-700	1'-2 1/16"	4 5/16"	4 1/8"	4 5/16"						
	33'	CMT-10-33-700	1'-9 3/4"	4 5/16"	4 1/8"	1'-0"	8	24"	54"	CMP-10-33-700	1'-2 1/16"	4 5/16"	4 1/8"	4 5/16"						
	43'	CMT-10-43-700	1'-9 3/4"	4 5/16"	4 1/8"	1'-0"	10	24"	64"	CMP-10-43-700	1'-2 1/16"	4 5/16"	4 1/8"	4 5/16"						
	53'	CMT-10-53-700	1'-9 3/4"	4 5/16"	4 1/8"	1'-0"	11	36"	76"	CMP-10-53-700	1'-2 1/16"	4 5/16"	4 1/8"	4 5/16"						
	63'	CMT-10-63-700	1'-9 3/4"	4 5/16"	4 1/8"	1'-0"	13	36"	87"	CMP-10-63-700	1'-2 1/16"	4 5/16"	4 1/8"	4 5/16"						
	83'	CMT-10-83-700	1'-9 3/4"	4 5/16"	4 1/8"	1'-0"	16	54"	109"	CMP-10-83-700	1'-2 1/16"	4 5/16"	4 1/8"	4 5/16"						
	103'	CMT-10-103-700	1'-9 3/4"	4 5/16"	4 1/8"	1'-0"	20	54"	131"	CMP-10-103-700	1'-2 1/16"	4 5/16"	4 1/8"	4 5/16"						
15'	23'	CMT-15-23-700	1'-9 3/4"	1'-0"	4 1/8"	1'-0"	7	12"	49"	CMP-15-23-700	1'-4 1/8"	1'-0"	4 1/8"	4 5/16"						
	33'	CMT-15-33-700	1'-9 3/4"	1'-0"	4 1/8"	1'-0"	9	24"	60"	CMP-15-33-700	1'-4 1/8"	1'-0"	4 1/8"	4 5/16"						
	43'	CMT-15-43-700	1'-9 3/4"	1'-0"	4 1/8"	1'-0"	11	24"	70"	CMP-15-43-700	1'-4 1/8"	1'-0"	4 1/8"	4 5/16"						
	53'	CMT-15-53-700	1'-9 3/4"	1'-0"	4 1/8"	1'-0"	12	36"	82"	CMP-15-53-700	1'-4 1/8"	1'-0"	4 1/8"	4 5/16"						
	63'	CMT-15-63-700	1'-9 3/4"	1'-0"	4 1/8"	1'-0"	14	36"	93"	CMP-15-63-700	1'-4 1/8"	1'-0"	4 1/8"	4 5/16"						
	83'	CMT-15-83-700	1'-9 3/4"	1'-0"	4 1/8"	1'-0"	17	54"	115"	CMP-15-83-700	1'-4 1/8"	1'-0"	4 1/8"	4 5/16"						
20'	23'	CMT-20-23-700	1'-9 3/4"	1'-0"	4 1/8"	1'-0"	9	12"	54"	CMP-20-23-700	1'-4 1/8"	1'-0"	4 1/8"	4 5/16"						
	33'	CMT-20-33-700	1'-9 3/4"	1'-0"	4 1/8"	1'-0"	11	24"	65"	CMP-20-33-700	1'-4 1/8"	1'-0"	4 1/8"	4 5/16"						
	43'	CMT-20-43-700	1'-9 3/4"	1'-0"	4 1/8"	1'-0"	13	24"	75"	CMP-20-43-700	1'-4 1/8"	1'-0"	4 1/8"	4 5/16"						
	53'	CMT-20-53-700	1'-9 3/4"	1'-0"	4 1/8"	1'-0"	14	36"	87"	CMP-20-53-700	1'-4 1/8"	1'-0"	4 1/8"	4 5/16"						
	63'	CMT-20-63-700	1'-9 3/4"	1'-0"	4 1/8"	1'-0"	16	36"	98"	CMP-20-63-700	1'-4 1/8"	1'-0"	4 1/8"	4 5/16"						
	83'	CMT-20-83-700	1'-9 3/4"	1'-0"	4 1/8"	1'-0"	19	54"	120"	CMP-20-83-700	1'-4 1/8"	1'-0"	4 1/8"	4 5/16"						
23'	23'	CMT-23-23-700	1'-9 3/4"	1'-0"	4 1/8"	1'-0"	10	12"	58"	CMP-23-23-700	1'-4 1/8"	1'-0"	4 1/8"	4 5/16"						
	33'	CMT-23-33-700	1'-9 3/4"	1'-0"	4 1/8"	1'-0"	12	24"	69"	CMP-23-33-700	1'-4 1/8"	1'-0"	4 1/8"	4 5/16"						
	43'	CMT-23-43-700	1'-9 3/4"	1'-0"	4 1/8"	1'-0"	14	24"	79"	CMP-23-43-700	1'-4 1/8"	1'-0"	4 1/8"	4 5/16"						
	53'	CMT-23-53-700	1'-9 3/4"	1'-0"	4 1/8"	1'-0"	15	36"	91"	CMP-23-53-700	1'-4 1/8"	1'-0"	4 1/8"	4 5/16"						
	63'	CMT-23-63-700	1'-9 3/4"	1'-0"	4 1/8"	1'-0"	17	36"	102"	CMP-23-63-700	1'-4 1/8"	1'-0"	4 1/8"	4 5/16"						
	83'	CMT-23-83-700	1'-9 3/4"	1'-0"	4 1/8"	1'-0"	20	54"	124"	CMP-23-83-700	1'-4 1/8"	1'-0"	4 1/8"	4 5/16"						
28'	23'	CMT-28-23-700	1'-11 5/8"	1'-4"	4 1/8"	1'-0"	11	12"	63"	CMP-28-23-700	1'-8 1/8"	1'-4"	4 1/8"	4 5/16"						
	33'	CMT-28-33-700	1'-11 5/8"	1'-4"	4 1/8"	1'-0"	13	24"	74"	CMP-28-33-700	1'-8 1/8"	1'-4"	4 1/8"	4 5/16"						
	43'	CMT-28-43-700	1'-11 5/8"	1'-4"	4 1/8"	1'-0"	15	24"	85"	CMP-28-43-700	1'-8 1/8"	1'-4"	4 1/8"	4 5/16"						
	53'	CMT-28-53-700	1'-11 5/8"	1'-4"	4 1/8"	1'-0"	16	36"	96"	CMP-28-53-700	1'-8 1/8"	1'-4"	4 1/8"	4 5/16"						
	63'	CMT-28-63-700	1'-11 5/8"	1'-4"	4 1/8"	1'-0"	18	36"	107"	CMP-28-63-700	1'-8 1/8"	1'-4"	4 1/8"	4 5/16"						
	83'	CMT-28-83-700	1'-11 5/8"	1'-4"	4 1/8"	1'-0"	21	54"	129"	CMP-28-83-700	1'-8 1/8"	1'-4"	4 1/8"	4 5/16"						
34'	23'	CMT-34-23-700	2'-3 5/8"	1'-6"	4 1/8"	1'-4"	14	12"	70"	CMP-34-23-700	1'-10 1/8"	1'-6"	4 1/8"	4 5/16"						
	33'	CMT-34-33-700	2'-3 5/8"	1'-6"	4 1/8"	1'-4"	16	24"	81"	CMP-34-33-700	1'-10 1/8"	1'-6"	4 1/8"	4 5/16"						
	43'	CMT-34-43-700	2'-3 5/8"	1'-6"	4 1/8"	1'-4"	18	24"	91"	CMP-34-43-700	1'-10 1/8"	1'-6"	4 1/8"	4 5/16"						
	53'	CMT-34-53-700	2'-3 5/8"	1'-6"	4 1/8"	1'-4"	19	36"	103"	CMP-34-53-700	1'-10 1/8"	1'-6"	4 1/8"	4 5/16"						
	63'	CMT-34-63-700	2'-3 5/8"	1'-6"	4 1/8"	1'-4"	21	36"	114"	CMP-34-63-700	1'-10 1/8"	1'-6"	4 1/8"	4 5/16"						
	83'	CMT-34-83-700	2'-3 5/8"	1'-6"	4 1/8"	1'-4"	24	54"	136"	CMP-34-83-700	1'-10 1/8"	1'-6"	4 1/8"	4 5/16"						
	103'	CMT-34-103-700	2'-3 5/8"	1'-6"	4 1/8"	1'-4"	28	54"	158"	CMP-34-103-700	1'-10 1/8"	1'-6"	4 1/8"	4 5/16"						

20' 0" MAX. SUPPORT CENTERS

9' 0" MAX. SUPPORT CENTERS



TRUSSED TRACK RUNWAY SYSTEMS												PLAIN TRACK RUNWAY SYSTEMS								
SYSTEM DATA		MODEL NUMBER			BRIDGE/RUNWAY DATA				FESTOON DATA			MODEL NUMBER		BRIDGE/RUNWAY DATA						
BL	RL	CMT	BL	RL	TS	BRH	BH	C	RH	QTY	FTE	FCL	CMP	BL	RL	TS	BRH	BH	C	TH
8'	11'-6"	CMT-8-11.5-900	2'-6 3/4"	4 5/16"	4 1/8"	1'-6"	4	12"	28"	CMP-8-11-900	1'-2 1/16"	4 5/16"	4 1/8"	4 5/16"						
	23'	CMT-8-23-900	2'-6 3/4"	4 5/16"	4 1/8"	1'-6"	5	12"	41"	CMP-8-23-900	1'-2 1/16"	4 5/16"	4 1/8"	4 5/16"						
	33'	CMT-8-33-900	2'-6 3/4"	4 5/16"	4 1/8"	1'-6"	7	24"	52"	CMP-8-33-900	1'-2 1/16"	4 5/16"	4 1/8"	4 5/16"						
	43'	CMT-8-43-900	2'-6 3/4"	4 5/16"	4 1/8"	1'-6"	9	24"	62"	CMP-8-43-900	1'-2 1/16"	4 5/16"	4 1/8"	4 5/16"						
	53'	CMT-8-53-900	2'-6 3/4"	4 5/16"	4 1/8"	1'-6"	10	36"	74"	CMP-8-53-900	1'-2 1/16"	4 5/16"	4 1/8"	4 5/16"						
	63'	CMT-8-63-900	2'-6 3/4"	4 5/16"	4 1/8"	1'-6"	12	36"	85"	CMP-8-63-900	1'-2 1/16"	4 5/16"	4 1/8"	4 5/16"						
	83'	CMT-8-83-900	2'-6 3/4"	4 5/16"	4 1/8"	1'-6"	15	54"	107"	CMP-8-83-900	1'-2 1/16"	4 5/16"	4 1/8"	4 5/16"						
103'	CMT-8-103-900	2'-6 3/4"	4 5/16"	4 1/8"	1'-6"	19	54"	129"	CMP-8-103-900	1'-2 1/16"	4 5/16"	4 1/8"	4 5/16"							
10'	11'-6"	CMT-10-11.5-900	2'-6 3/4"	7 13/16"	4 1/8"	1'-6"	5	12"	30"	CMP-10-11-900	1'-2 1/16"	7 13/16"	4 1/8"	4 5/16"						
	23'	CMT-10-23-900	2'-6 3/4"	7 13/16"	4 1/8"	1'-6"	6	12"	43"	CMP-10-23-900	1'-2 1/16"	7 13/16"	4 1/8"	4 5/16"						
	33'	CMT-10-33-900	2'-6 3/4"	7 13/16"	4 1/8"	1'-6"	8	24"	54"	CMP-10-33-900	1'-2 1/16"	7 13/16"	4 1/8"	4 5/16"						
	43'	CMT-10-43-900	2'-6 3/4"	7 13/16"	4 1/8"	1'-6"	10	24"	64"	CMP-10-43-900	1'-2 1/16"	7 13/16"	4 1/8"	4 5/16"						
	53'	CMT-10-53-900	2'-6 3/4"	7 13/16"	4 1/8"	1'-6"	11	36"	76"	CMP-10-53-900	1'-2 1/16"	7 13/16"	4 1/8"	4 5/16"						
	63'	CMT-10-63-900	2'-6 3/4"	7 13/16"	4 1/8"	1'-6"	13	36"	87"	CMP-10-63-900	1'-2 1/16"	7 13/16"	4 1/8"	4 5/16"						
	83'	CMT-10-83-900	2'-6 3/4"	7 13/16"	4 1/8"	1'-6"	16	54"	109"	CMP-10-83-900	1'-2 1/16"	7 13/16"	4 1/8"	4 5/16"						
103'	CMT-10-103-900	2'-6 3/4"	7 13/16"	4 1/8"	1'-6"	20	54"	131"	CMP-10-103-900	1'-2 1/16"	7 13/16"	4 1/8"	4 5/16"							
15'	23'	CMT-15-23-900	2'-6 3/4"	1'-6"	4 1/8"	1'-6"	7	12"	49"	CMP-15-23-900	1'-10 1/8"	1'-6"	4 1/8"	4 5/16"						
	33'	CMT-15-33-900	2'-6 3/4"	1'-6"	4 1/8"	1'-6"	9	24"	60"	CMP-15-33-900	1'-10 1/8"	1'-6"	4 1/8"	4 5/16"						
	43'	CMT-15-43-900	2'-6 3/4"	1'-6"	4 1/8"	1'-6"	11	24"	70"	CMP-15-43-900	1'-10 1/8"	1'-6"	4 1/8"	4 5/16"						
	53'	CMT-15-53-900	2'-6 3/4"	1'-6"	4 1/8"	1'-6"	12	36"	82"	CMP-15-53-900	1'-10 1/8"	1'-6"	4 1/8"	4 5/16"						
	63'	CMT-15-63-900	2'-6 3/4"	1'-6"	4 1/8"	1'-6"	14	36"	93"	CMP-15-63-900	1'-10 1/8"	1'-6"	4 1/8"	4 5/16"						
	83'	CMT-15-83-900	2'-6 3/4"	1'-6"	4 1/8"	1'-6"	17	54"	115"	CMP-15-83-900	1'-10 1/8"	1'-6"	4 1/8"	4 5/16"						
	103'	CMT-15-103-900	2'-6 3/4"	1'-6"	4 1/8"	1'-6"	21	54"	137"	CMP-15-103-900	1'-10 1/8"	1'-6"	4 1/8"	4 5/16"						
20'	23'	CMT-20-23-900	2'-6 3/4"	1'-6"	4 1/8"	1'-6"	9	12"	54"	CMP-20-23-900	1'-10 1/8"	1'-6"	4 1/8"	4 5/16"						
	33'	CMT-20-33-900	2'-6 3/4"	1'-6"	4 1/8"	1'-6"	11	24"	65"	CMP-20-33-900	1'-10 1/8"	1'-6"	4 1/8"	4 5/16"						
	43'	CMT-20-43-900	2'-6 3/4"	1'-6"	4 1/8"	1'-6"	13	24"	75"	CMP-20-43-900	1'-10 1/8"	1'-6"	4 1/8"	4 5/16"						
	53'	CMT-20-53-900	2'-6 3/4"	1'-6"	4 1/8"	1'-6"	14	36"	87"	CMP-20-53-900	1'-10 1/8"	1'-6"	4 1/8"	4 5/16"						
	63'	CMT-20-63-900	2'-6 3/4"	1'-6"	4 1/8"	1'-6"	16	36"	98"	CMP-20-63-900	1'-10 1/8"	1'-6"	4 1/8"	4 5/16"						
	83'	CMT-20-83-900	2'-6 3/4"	1'-6"	4 1/8"	1'-6"	19	54"	120"	CMP-20-83-900	1'-10 1/8"	1'-6"	4 1/8"	4 5/16"						
	103'	CMT-20-103-900	2'-6 3/4"	1'-6"	4 1/8"	1'-6"	23	54"	142"	CMP-20-103-900	1'-10 1/8"	1'-6"	4 1/8"	4 5/16"						
23'	23'	CMT-23-23-900	2'-6 3/4"	1'-6"	4 1/8"	1'-6"	10	12"	58"	CMP-23-23-900	1'-10 1/8"	1'-6"	4 1/8"	4 5/16"						
	33'	CMT-23-33-900	2'-6 3/4"	1'-6"	4 1/8"	1'-6"	12	24"	69"	CMP-23-33-900	1'-10 1/8"	1'-6"	4 1/8"	4 5/16"						
	43'	CMT-23-43-900	2'-6 3/4"	1'-6"	4 1/8"	1'-6"	14	24"	79"	CMP-23-43-900	1'-10 1/8"	1'-6"	4 1/8"	4 5/16"						
	53'	CMT-23-53-900	2'-6 3/4"	1'-6"	4 1/8"	1'-6"	15	36"	91"	CMP-23-53-900	1'-10 1/8"	1'-6"	4 1/8"	4 5/16"						
	63'	CMT-23-63-900	2'-6 3/4"	1'-6"	4 1/8"	1'-6"	17	36"	102"	CMP-23-63-900	1'-10 1/8"	1'-6"	4 1/8"	4 5/16"						
	83'	CMT-23-83-900	2'-6 3/4"	1'-6"	4 1/8"	1'-6"	20	54"	124"	CMP-23-83-900	1'-10 1/8"	1'-6"	4 1/8"	4 5/16"						
	103'	CMT-23-103-900	2'-6 3/4"	1'-6"	4 1/8"	1'-6"	24	54"	146"	CMP-23-103-900	1'-10 1/8"	1'-6"	4 1/8"	4 5/16"						
28'	23'	CMT-28-23-900	2'-6 3/4"	1'-8"	4 1/8"	1'-6"	11	12"	63"	CMP-28-23-900	2'-0 1/8"	1'-8"	4 1/8"	4 5/16"						
	33'	CMT-28-33-900	2'-6 3/4"	1'-8"	4 1/8"	1'-6"	13	24"	74"	CMP-28-33-900	2'-0 1/8"	1'-8"	4 1/8"	4 5/16"						
	43'	CMT-28-43-900	2'-6 3/4"	1'-8"	4 1/8"	1'-6"	15	24"	85"	CMP-28-43-900	2'-0 1/8"	1'-8"	4 1/8"	4 5/16"						
	53'	CMT-28-53-900	2'-6 3/4"	1'-8"	4 1/8"	1'-6"	16	36"	96"	CMP-28-53-900	2'-0 1/8"	1'-8"	4 1/8"	4 5/16"						
	63'	CMT-28-63-900	2'-6 3/4"	1'-8"	4 1/8"	1'-6"	18	36"	107"	CMP-28-63-900	2'-0 1/8"	1'-8"	4 1/8"	4 5/16"						
	83'	CMT-28-83-900	2'-6 3/4"	1'-8"	4 1/8"	1'-6"	21	54"	129"	CMP-28-83-900	2'-0 1/8"	1'-8"	4 1/8"	4 5/16"						
	103'	CMT-28-103-900	2'-6 3/4"	1'-8"	4 1/8"	1'-6"	25	54"	151"	CMP-28-103-900	2'-0 1/8"	1'-8"	4 1/8"	4 5/16"						

← 20' 0" MAX. SUPPORT CENTERS →

← 6' 0" MAX. SUPPORT CENTERS →

6' - 0" / 20' - 0" MAXIMUM SUPPORT CENTERS

4,000 LB. CAPACITY

8' - 10' - 15' - 20' - 23' - 28' BRIDGE LENGTH



Technical drawing symbols and labels.

25' - 0" MAXIMUM SUPPORT CENTERS

TRUSSED TRACK RUNWAY SYSTEMS												
SYSTEM DATA		MODEL NUMBER			BRIDGE/RUNWAY DATA				FESTOON DATA			
BL	RL	CMT	BL	RL	TS	BRH	BH	C	RH	QTY	FTE	FCL
8'	28'	CMT-8-28-425	1'-3 1/2"	1 11/16"	2 1/4"	11"	6	24"	26'			
	53'	CMT-8-53-425	1'-3 1/2"	1 11/16"	2 1/4"	11"	10	36"	74'			
	78'	CMT-8-78-425	1'-3 1/2"	1 11/16"	2 1/4"	11"	14	54"	101'			
	103'	CMT-8-103-425	1'-3 1/2"	1 11/16"	2 1/4"	11"	19	54"	129'			
10'	28'	CMT-10-28-425	1'-3 1/2"	3 11/16"	2 1/4"	11"	7	24"	48'			
	53'	CMT-10-53-425	1'-3 1/2"	3 11/16"	2 1/4"	11"	11	36"	76'			
	78'	CMT-10-78-425	1'-3 1/2"	3 11/16"	2 1/4"	11"	15	54"	103'			
	103'	CMT-10-103-425	1'-3 1/2"	3 11/16"	2 1/4"	11"	20	54"	131'			
15'	28'	CMT-15-28-425	1'-3 1/2"	9"	2 1/4"	11"	8	24"	54'			
	53'	CMT-15-53-425	1'-3 1/2"	9"	2 1/4"	11"	12	36"	82'			
	78'	CMT-15-78-425	1'-3 1/2"	9"	2 1/4"	11"	16	54"	109'			
	103'	CMT-15-103-425	1'-3 1/2"	9"	2 1/4"	11"	21	54"	137'			
20'	28'	CMT-20-28-425	1'-3 1/2"	9"	2 1/4"	11"	10	24"	59'			
	53'	CMT-20-53-425	1'-3 1/2"	9"	2 1/4"	11"	14	36"	87'			
	78'	CMT-20-78-425	1'-3 1/2"	9"	2 1/4"	11"	18	54"	114'			
	103'	CMT-20-103-425	1'-3 1/2"	9"	2 1/4"	11"	23	54"	142'			
23'	28'	CMT-23-28-425	1'-3 1/2"	9"	2 1/4"	11"	11	24"	63'			
	53'	CMT-23-53-425	1'-3 1/2"	9"	2 1/4"	11"	15	36"	91'			
	78'	CMT-23-78-425	1'-3 1/2"	9"	2 1/4"	11"	19	54"	118'			
	103'	CMT-23-103-425	1'-3 1/2"	9"	2 1/4"	11"	24	54"	146'			
28'	28'	CMT-28-28-425	1'-5 7/16"	11"	2 1/4"	11"	12	24"	68'			
	53'	CMT-28-53-425	1'-5 7/16"	11"	2 1/4"	11"	16	36"	96'			
	78'	CMT-28-78-425	1'-5 7/16"	11"	2 1/4"	11"	20	54"	123'			
	103'	CMT-28-103-425	1'-5 7/16"	11"	2 1/4"	11"	25	54"	151'			

25' - 0" MAXIMUM SUPPORT CENTERS
250 LB. CAPACITY

TRUSSED TRACK RUNWAY SYSTEMS												
SYSTEM DATA		MODEL NUMBER			BRIDGE/RUNWAY DATA				FESTOON DATA			
BL	RL	CMT	BL	RL	TS	BRH	BH	C	RH	QTY	FTE	FCL
8'	28'	CMT-8-28-525	1'-6 7/16"	2 3/8"	2 5/8"	1-0 3/8"	6	24"	26'			
	53'	CMT-8-53-525	1'-6 7/16"	2 3/8"	2 5/8"	1-0 3/8"	10	36"	74'			
	78'	CMT-8-78-525	1'-6 7/16"	2 3/8"	2 5/8"	1-0 3/8"	14	54"	101'			
	103'	CMT-8-103-525	1'-6 7/16"	2 3/8"	2 5/8"	1-0 3/8"	19	54"	129'			
10'	28'	CMT-10-28-525	1'-6 7/16"	6 3/8"	2 5/8"	1-0 3/8"	7	24"	48'			
	53'	CMT-10-53-525	1'-6 7/16"	6 3/8"	2 5/8"	1-0 3/8"	11	36"	76'			
	78'	CMT-10-78-525	1'-6 7/16"	6 3/8"	2 5/8"	1-0 3/8"	15	54"	103'			
	103'	CMT-10-103-525	1'-6 7/16"	6 3/8"	2 5/8"	1-0 3/8"	20	54"	131'			
15'	28'	CMT-15-28-525	1'-6 7/16"	10"	2 5/8"	1-0 3/8"	8	24"	54'			
	53'	CMT-15-53-525	1'-6 7/16"	10"	2 5/8"	1-0 3/8"	12	36"	82'			
	78'	CMT-15-78-525	1'-6 7/16"	10"	2 5/8"	1-0 3/8"	16	54"	109'			
	103'	CMT-15-103-525	1'-6 7/16"	10"	2 5/8"	1-0 3/8"	21	54"	137'			
20'	28'	CMT-20-28-525	1'-6 7/16"	10"	2 5/8"	1-0 3/8"	10	24"	59'			
	53'	CMT-20-53-525	1'-6 7/16"	10"	2 5/8"	1-0 3/8"	14	36"	87'			
	78'	CMT-20-78-525	1'-6 7/16"	10"	2 5/8"	1-0 3/8"	18	54"	114'			
	103'	CMT-20-103-525	1'-6 7/16"	10"	2 5/8"	1-0 3/8"	23	54"	142'			
23'	28'	CMT-23-28-525	1'-6 7/16"	10"	2 5/8"	1-0 3/8"	11	24"	63'			
	53'	CMT-23-53-525	1'-6 7/16"	10"	2 5/8"	1-0 3/8"	15	36"	91'			
	78'	CMT-23-78-525	1'-6 7/16"	10"	2 5/8"	1-0 3/8"	19	54"	118'			
	103'	CMT-23-103-525	1'-6 9/16"	10"	2 5/8"	1-0 3/8"	24	54"	146'			
28'	28'	CMT-28-28-525	1'-8 1/4"	1'-0 3/8"	2 5/8"	1-0 3/8"	12	24"	68'			
	53'	CMT-28-53-525	1'-8 1/4"	1'-0 3/8"	2 5/8"	1-0 3/8"	16	36"	96'			
	78'	CMT-28-78-525	1'-8 1/4"	1'-0 3/8"	2 5/8"	1-0 3/8"	20	54"	123'			
	103'	CMT-28-103-525	1'-8 1/4"	1'-0 3/8"	2 5/8"	1-0 3/8"	25	54"	151'			
34'	28'	CMT-34-28-525	1'-8 1/4"	1'-2 3/8"	2 5/8"	1-0 3/8"	15	24"	75'			
	53'	CMT-34-53-525	1'-8 1/4"	1'-2 3/8"	2 5/8"	1-0 3/8"	19	36"	103'			
	78'	CMT-34-78-525	1'-8 1/4"	1'-2 3/8"	2 5/8"	1-0 3/8"	23	54"	130'			
	103'	CMT-34-103-525	1'-8 1/4"	1'-2 3/8"	2 5/8"	1-0 3/8"	28	54"	158'			

25' - 0" MAXIMUM SUPPORT CENTERS
500 LB. CAPACITY

8' - 10' - 15' - 20' - 23' - 28' - 34' BRIDGE LENGTH



TRUSSED TRACK RUNWAY SYSTEMS

SYSTEM DATA		MODEL NUMBER			BRIDGE/RUNWAY DATA				FESTOON DATA			
BL	RL	CMT	BL	RL	TS	BRH	BH	C	RH	QTY	FTE	FCL
8'	28'	CMT-8-28-625	1'-9 1/8"	2 15/16"	3 1/16"	1-1 7/8"				6	24"	46'
	53'	CMT-8-53-625	1'-9 1/8"	2 15/16"	3 1/16"	1-1 7/8"				10	36"	74'
	78'	CMT-8-78-625	1'-9 1/8"	2 15/16"	3 1/16"	1-1 7/8"				14	54"	101'
	103'	CMT-8-103-625	1'-9 1/8"	2 15/16"	3 1/16"	1-1 7/8"				19	54"	129'
10'	28'	CMT-10-28-625	1'-9 1/8"	5 15/16"	3 1/16"	1-1 7/8"				7	24"	48'
	53'	CMT-10-53-625	1'-9 1/8"	5 15/16"	3 1/16"	1-1 7/8"				11	36"	76'
	78'	CMT-10-78-625	1'-9 1/8"	5 15/16"	3 1/16"	1-1 7/8"				15	54"	103'
	103'	CMT-10-103-625	1'-9 1/8"	5 15/16"	3 1/16"	1-1 7/8"				20	54"	131'
15'	28'	CMT-15-28-625	1'-9 1/8"	11"	3 1/16"	1-1 7/8"				8	24"	54'
	53'	CMT-15-53-625	1'-9 1/8"	11"	3 1/16"	1-1 7/8"				12	36"	82'
	78'	CMT-15-78-625	1'-9 1/8"	11"	3 1/16"	1-1 7/8"				16	54"	109'
	103'	CMT-15-103-625	1'-9 1/8"	11"	3 1/16"	1-1 7/8"				21	54"	137'
20'	28'	CMT-20-28-625	1'-9 1/8"	11"	3 1/16"	1-1 7/8"				10	24"	59'
	53'	CMT-20-53-625	1'-9 1/8"	11"	3 1/16"	1-1 7/8"				14	36"	87'
	78'	CMT-20-78-625	1'-9 1/8"	11"	3 1/16"	1-1 7/8"				18	54"	114'
	103'	CMT-20-103-625	1'-9 1/8"	11"	3 1/16"	1-1 7/8"				23	54"	142'
23'	28'	CMT-23-28-625	1'-9 1/8"	11"	3 1/16"	1-1 7/8"				11	24"	63'
	53'	CMT-23-53-625	1'-9 1/8"	11"	3 1/16"	1-1 7/8"				15	36"	91'
	78'	CMT-23-78-625	1'-9 1/8"	11"	3 1/16"	1-1 7/8"				19	54"	118'
	103'	CMT-23-103-625	1'-9 1/8"	11"	3 1/16"	1-1 7/8"				24	54"	146'
28'	28'	CMT-28-28-625	1'-11"	1'-1 7/8"	3 1/16"	1-1 7/8"				12	24"	68'
	53'	CMT-28-53-625	1'-11"	1'-1 7/8"	3 1/16"	1-1 7/8"				16	36"	96'
	78'	CMT-28-78-625	1'-11"	1'-1 7/8"	3 1/16"	1-1 7/8"				20	54"	123'
	103'	CMT-28-103-625	1'-11"	1'-1 7/8"	3 1/16"	1-1 7/8"				25	54"	151'
34'	28'	CMT-34-28-625	1'-11"	1'-5"	3 1/16"	1-1 7/8"				15	24"	75'
	53'	CMT-34-53-625	1'-11"	1'-5"	3 1/16"	1-1 7/8"				19	36"	103'
	78'	CMT-34-78-625	1'-11"	1'-5"	3 1/16"	1-1 7/8"				23	54"	130'
	103'	CMT-34-103-625	1'-11"	1'-5"	3 1/16"	1-1 7/8"				28	54"	158'

25'- 0" MAXIMUM SUPPORT CENTERS
1,000 LB. CAPACITY

TRUSSED TRACK RUNWAY SYSTEMS

SYSTEM DATA		MODEL NUMBER			BRIDGE/RUNWAY DATA				FESTOON DATA			
BL	RL	CMT	BL	RL	TS	BRH	BH	C	RH	QTY	FTE	FCL
8'	28'	CMT-8-28-725	2'-1 3/4"	4 5/16"	4 1/8"	1-4"				6	24"	46'
	53'	CMT-8-53-725	2'-1 3/4"	4 5/16"	4 1/8"	1-4"				10	36"	74'
	78'	CMT-8-78-725	2'-1 3/4"	4 5/16"	4 1/8"	1-4"				14	54"	101'
	103'	CMT-8-103-725	2'-1 3/4"	2 15/16"	4 1/8"	1-4"				19	54"	129'
10'	28'	CMT-10-28-725	2'-1 3/4"	4 5/16"	4 1/8"	1-4"				7	24"	48'
	53'	CMT-10-53-725	2'-1 3/4"	4 5/16"	4 1/8"	1-4"				11	36"	76'
	78'	CMT-10-78-725	2'-1 3/4"	4 5/16"	4 1/8"	1-4"				15	54"	103'
	103'	CMT-10-103-725	2'-1 3/4"	4 5/16"	4 1/8"	1-4"				20	54"	131'
15'	28'	CMT-15-28-725	2'-1 3/4"	1'-0"	4 1/8"	1-4"				8	24"	54'
	53'	CMT-15-53-725	2'-1 3/4"	1'-0"	4 1/8"	1-4"				12	36"	82'
	78'	CMT-15-78-725	2'-1 3/4"	1'-0"	4 1/8"	1-4"				16	54"	109'
	103'	CMT-15-103-725	2'-1 3/4"	1'-0"	4 1/8"	1-4"				21	54"	137'
20'	28'	CMT-20-28-725	2'-1 3/4"	1'-0"	4 1/8"	1-4"				10	24"	59'
	53'	CMT-20-53-725	2'-1 3/4"	1'-0"	4 1/8"	1-4"				14	36"	87'
	78'	CMT-20-78-725	2'-1 3/4"	1'-0"	4 1/8"	1-4"				18	54"	114'
	103'	CMT-20-103-725	2'-1 3/4"	1'-0"	4 1/8"	1-4"				23	54"	142'
23'	28'	CMT-23-28-725	2'-1 3/4"	1'-0"	4 1/8"	1-4"				11	24"	63'
	53'	CMT-23-53-725	2'-1 3/4"	1'-0"	4 1/8"	1-4"				15	36"	91'
	78'	CMT-23-78-725	2'-1 3/4"	1'-0"	4 1/8"	1-4"				19	54"	118'
	103'	CMT-23-103-725	2'-1 3/4"	1'-0"	4 1/8"	1-4"				24	54"	146'
28'	28'	CMT-28-28-725	2'-3 5/8"	1'-4"	4 1/8"	1-4"				12	24"	68'
	53'	CMT-28-53-725	2'-3 5/8"	1'-4"	4 1/8"	1-4"				16	36"	96'
	78'	CMT-28-78-725	2'-3 5/8"	1'-4"	4 1/8"	1-4"				20	54"	123'
	103'	CMT-28-103-725	2'-3 5/8"	1'-4"	4 1/8"	1-4"				25	54"	151'
34'	28'	CMT-34-28-725	2'-3 5/8"	1'-6"	4 1/8"	1-4"				15	24"	75'
	53'	CMT-34-53-725	2'-3 5/8"	1'-6"	4 1/8"	1-4"				19	36"	103'
	78'	CMT-34-78-725	2'-3 5/8"	1'-6"	4 1/8"	1-4"				23	54"	130'
	103'	CMT-34-103-725	2'-3 5/8"	1'-6"	4 1/8"	1-4"				28	54"	158'

25'- 0" MAXIMUM SUPPORT CENTERS
2,000 LB. CAPACITY

25' - 0" MAXIMUM SUPPORT CENTERS

8' - 10' - 15' - 20' - 23' - 28' - 34' BRIDGE LENGTH



T | a | a | • | a | A | O | E | S | a | E | a | a | • | a | B | { | A
V | E | A | F | E | C | H | H | I | H | A | A | F | I | E | I | E | I | E | I | E | I | A

25' - 0" / 30' - 0" MAXIMUM SUPPORT CENTERS

TRUSSED TRACK RUNWAY SYSTEMS												
SYSTEM DATA		MODEL NUMBER			BRIDGE/RUNWAY DATA				FESTOON DATA			
BL	RL	CMT	BL	RL	TS	BRH	BH	C	RH	QTY	FTE	FCL
8'	28'	CMT-8-28-925	2'-8 3/4"	4 5/16"	4 1/8"	1'-8"	6	24"	46'			
	53'	CMT-8-53-925	2'-8 3/4"	4 5/16"	4 1/8"	1'-8"	10	36"	74'			
	78'	CMT-8-78-925	2'-8 3/4"	4 5/16"	4 1/8"	1'-8"	14	54"	101'			
	103'	CMT-8-103-925	2'-8 3/4"	4 5/16"	4 1/8"	1'-8"	19	54"	129'			
10'	28'	CMT-10-28-925	2'-8 3/4"	7 13/16"	4 1/8"	1'-8"	7	24"	48'			
	53'	CMT-10-53-925	2'-8 3/4"	7 13/16"	4 1/8"	1'-8"	11	36"	76'			
	78'	CMT-10-78-925	2'-8 3/4"	7 13/16"	4 1/8"	1'-8"	15	54"	103'			
	103'	CMT-10-103-925	2'-8 3/4"	7 13/16"	4 1/8"	1'-8"	20	54"	131'			
15'	28'	CMT-15-28-925	2'-8 3/4"	1'-6"	4 1/8"	1'-8"	8	24"	54'			
	53'	CMT-15-53-925	2'-8 3/4"	1'-6"	4 1/8"	1'-8"	12	36"	82'			
	78'	CMT-15-78-925	2'-8 3/4"	1'-6"	4 1/8"	1'-8"	16	54"	109'			
	103'	CMT-15-103-925	2'-8 3/4"	1'-6"	4 1/8"	1'-8"	21	54"	137'			
20'	28'	CMT-20-28-925	2'-8 3/4"	1'-6"	4 1/8"	1'-8"	10	24"	59'			
	53'	CMT-20-53-925	2'-8 3/4"	1'-6"	4 1/8"	1'-8"	14	36"	87'			
	78'	CMT-20-78-925	2'-8 3/4"	1'-6"	4 1/8"	1'-8"	18	54"	114'			
	103'	CMT-20-103-925	2'-8 3/4"	1'-6"	4 1/8"	1'-8"	23	54"	142'			
23'	28'	CMT-23-28-925	2'-8 3/4"	1'-6"	4 1/8"	1'-8"	11	24"	63'			
	53'	CMT-23-53-925	2'-8 3/4"	1'-6"	4 1/8"	1'-8"	15	36"	91'			
	78'	CMT-23-78-925	2'-8 3/4"	1'-6"	4 1/8"	1'-8"	19	54"	118'			
	103'	CMT-23-103-925	2'-8 3/4"	1'-6"	4 1/8"	1'-8"	24	54"	146'			
28'	28'	CMT-28-28-925	2'-8 3/4"	1'-8"	4 1/8"	1'-8"	12	24"	68'			
	53'	CMT-28-53-925	2'-8 3/4"	1'-8"	4 1/8"	1'-8"	16	36"	96'			
	78'	CMT-28-78-925	2'-8 3/4"	1'-8"	4 1/8"	1'-8"	20	54"	123'			
	103'	CMT-28-103-925	2'-8 3/4"	1'-8"	4 1/8"	1'-8"	25	54"	151'			

25' - 0" MAXIMUM SUPPORT CENTERS
4,000 LB. CAPACITY

TRUSSED TRACK RUNWAY SYSTEMS												
SYSTEM DATA		MODEL NUMBER			BRIDGE/RUNWAY DATA				FESTOON DATA			
BL	RL	CMT	BL	RL	TS	BRH	BH	C	RH	QTY	FTE	FCL
8'	34'	CMT-8-34-530	1'-8 9/16"	2 3/8"	2 5/8"	1'-2 3/8"	7	24"	53'			
	64'	CMT-8-64-530	1'-8 9/16"	2 3/8"	2 5/8"	1'-2 3/8"	12	36"	86'			
	94'	CMT-8-94-530	1'-8 9/16"	2 3/8"	2 5/8"	1'-2 3/8"	17	54"	119'			
	124'	CMT-8-124-530	1'-8 9/16"	2 3/8"	2 5/8"	1'-2 3/8"	22	70"	152'			
10'	34'	CMT-10-34-530	1'-8 9/16"	6 3/8"	2 5/8"	1'-2 3/8"	8	24"	54'			
	64'	CMT-10-64-530	1'-8 9/16"	6 3/8"	2 5/8"	1'-2 3/8"	13	36"	88'			
	94'	CMT-10-94-530	1'-8 9/16"	6 3/8"	2 5/8"	1'-2 3/8"	18	54"	121'			
	124'	CMT-10-124-530	1'-8 9/16"	6 3/8"	2 5/8"	1'-2 3/8"	23	70"	154'			
15'	34'	CMT-15-34-530	1'-8 9/16"	10"	2 5/8"	1'-2 3/8"	9	24"	60'			
	64'	CMT-15-64-530	1'-8 9/16"	10"	2 5/8"	1'-2 3/8"	14	36"	93'			
	94'	CMT-15-94-530	1'-8 9/16"	10"	2 5/8"	1'-2 3/8"	19	54"	126'			
	124'	CMT-15-124-530	1'-8 9/16"	10"	2 5/8"	1'-2 3/8"	24	70"	159'			
20'	34'	CMT-20-34-530	1'-8 9/16"	10"	2 5/8"	1'-2 3/8"	11	24"	66'			
	64'	CMT-20-64-530	1'-8 9/16"	10"	2 5/8"	1'-2 3/8"	16	36"	99'			
	94'	CMT-20-94-530	1'-8 9/16"	10"	2 5/8"	1'-2 3/8"	21	54"	132'			
	124'	CMT-20-124-530	1'-8 9/16"	10"	2 5/8"	1'-2 3/8"	26	70"	165'			
23'	34'	CMT-23-34-530	1'-8 9/16"	10"	2 5/8"	1'-2 3/8"	12	24"	69'			
	64'	CMT-23-64-530	1'-8 9/16"	10"	2 5/8"	1'-2 3/8"	17	36"	102'			
	94'	CMT-23-94-530	1'-8 9/16"	10"	2 5/8"	1'-2 3/8"	22	54"	135'			
	124'	CMT-23-124-530	1'-8 9/16"	10"	2 5/8"	1'-2 3/8"	27	70"	168'			
28'	34'	CMT-28-34-530	1'-10 3/8"	1'-0 3/8"	2 5/8"	1'-2 3/8"	13	24"	75'			
	64'	CMT-28-64-530	1'-10 3/8"	1'-0 3/8"	2 5/8"	1'-2 3/8"	18	36"	108'			
	94'	CMT-28-94-530	1'-10 3/8"	1'-0 3/8"	2 5/8"	1'-2 3/8"	23	54"	141'			
	124'	CMT-28-124-530	1'-10 3/8"	1'-0 3/8"	2 5/8"	1'-2 3/8"	28	70"	174'			
34'	34'	CMT-34-34-530	1'-10 3/8"	1'-2 3/8"	2 5/8"	1'-2 3/8"	16	24"	81'			
	64'	CMT-34-64-530	1'-10 3/8"	1'-2 3/8"	2 5/8"	1'-2 3/8"	21	36"	114'			
	94'	CMT-34-94-530	1'-10 3/8"	1'-2 3/8"	2 5/8"	1'-2 3/8"	26	54"	147'			
	124'	CMT-34-124-530	1'-10 3/8"	1'-2 3/8"	2 5/8"	1'-2 3/8"	31	70"	180'			

30' - 0" MAXIMUM SUPPORT CENTERS
500 LB. CAPACITY

8' - 10' - 15' - 20' - 23' - 28' - 34' BRIDGE LENGTH



TRUSSED TRACK RUNWAY SYSTEMS												
SYSTEM DATA		MODEL NUMBER			BRIDGE/RUNWAY DATA				FESTOON DATA			
BL	RL	CMT	BL	RL	TS	BRH	BH	C	RH	QTY	FTE	FCL
8'	34'	CMT-8-34-630	2'-0 1/4"	2 15/16"	3 1/16"	1'-5"				7	24"	53'
	64'	CMT-8-64-630	2'-0 1/4"	2 15/16"	3 1/16"	1'-5"				12	36"	86'
	94'	CMT-8-94-630	2'-0 1/4"	2 15/16"	3 1/16"	1'-5"				17	54"	119'
	124'	CMT-8-124-630	2'-0 1/4"	2 15/16"	3 1/16"	1'-5"				22	70"	152'
10'	34'	CMT-10-34-630	2'-0 1/4"	5 15/16"	3 1/16"	1'-5"				8	24"	55'
	64'	CMT-10-64-630	2'-0 1/4"	5 15/16"	3 1/16"	1'-5"				13	36"	88'
	94'	CMT-10-94-630	2'-0 1/4"	5 15/16"	3 1/16"	1'-5"				18	54"	121'
	124'	CMT-10-124-630	2'-0 1/4"	5 15/16"	3 1/16"	1'-5"				23	70"	154'
15'	34'	CMT-15-34-630	2'-0 1/4"	11"	3 1/16"	1'-5"				9	24"	60'
	64'	CMT-15-64-630	2'-0 1/4"	11"	3 1/16"	1'-5"				14	36"	93'
	94'	CMT-15-94-630	2'-0 1/4"	11"	3 1/16"	1'-5"				19	54"	126'
	124'	CMT-15-124-630	2'-0 1/4"	11"	3 1/16"	1'-5"				24	70"	159'
20'	34'	CMT-20-34-630	2'-0 1/4"	11"	3 1/16"	1'-5"				11	24"	66'
	64'	CMT-20-64-630	2'-0 1/4"	11"	3 1/16"	1'-5"				16	36"	99'
	94'	CMT-20-94-630	2'-0 1/4"	11"	3 1/16"	1'-5"				21	54"	132'
	124'	CMT-20-124-630	2'-0 1/4"	11"	3 1/16"	1'-5"				26	70"	165'
23'	34'	CMT-23-34-630	2'-0 1/4"	11"	3 1/16"	1'-5"				12	24"	69'
	64'	CMT-23-64-630	2'-0 1/4"	11"	3 1/16"	1'-5"				17	36"	102'
	94'	CMT-23-94-630	2'-0 1/4"	11"	3 1/16"	1'-5"				22	54"	135'
	124'	CMT-23-124-630	2'-0 1/4"	11"	3 1/16"	1'-5"				27	70"	168'
28'	34'	CMT-28-34-630	2'-2 1/8"	1'-1 7/8"	3 1/16"	1'-5"				13	24"	75'
	64'	CMT-28-64-630	2'-2 1/8"	1'-1 7/8"	3 1/16"	1'-5"				18	36"	108'
	94'	CMT-28-94-630	2'-2 1/8"	1'-1 7/8"	3 1/16"	1'-5"				23	54"	141'
	124'	CMT-28-124-630	2'-2 1/8"	1'-1 7/8"	3 1/16"	1'-5"				28	70"	174'
34'	34'	CMT-34-34-630	2'-2 1/8"	1'-5"	3 1/16"	1'-5"				16	24"	81'
	64'	CMT-34-64-630	2'-2 1/8"	1'-5"	3 1/16"	1'-5"				21	36"	114'
	94'	CMT-34-94-630	2'-2 1/8"	1'-5"	3 1/16"	1'-5"				26	54"	147'
	124'	CMT-34-124-630	2'-2 1/8"	1'-5"	3 1/16"	1'-5"				31	70"	180'

30' - 0" MAXIMUM SUPPORT CENTERS
1,000 LB. CAPACITY

TRUSSED TRACK RUNWAY SYSTEMS												
SYSTEM DATA		MODEL NUMBER			BRIDGE/RUNWAY DATA				FESTOON DATA			
BL	RL	CMT	BL	RL	TS	BRH	BH	C	RH	QTY	FTE	FCL
8'	34'	CMT-8-34-730	2'-3 3/4"	4 5/16"	4 1/8"	1'-6"				7	24"	53'
	64'	CMT-8-64-730	2'-3 3/4"	4 5/16"	4 1/8"	1'-6"				12	36"	86'
	94'	CMT-8-94-730	2'-3 3/4"	4 5/16"	4 1/8"	1'-6"				17	54"	119'
	124'	CMT-8-124-730	2'-3 3/4"	4 5/16"	4 1/8"	1'-6"				22	70"	152'
10'	34'	CMT-10-34-730	2'-3 3/4"	4 5/16"	4 1/8"	1'-6"				8	24"	54'
	64'	CMT-10-64-730	2'-3 3/4"	4 5/16"	4 1/8"	1'-6"				13	36"	88'
	94'	CMT-10-94-730	2'-3 3/4"	4 5/16"	4 1/8"	1'-6"				18	54"	121'
	124'	CMT-10-124-730	2'-3 3/4"	4 5/16"	4 1/8"	1'-6"				23	70"	154'
15'	34'	CMT-15-34-730	2'-3 3/4"	1'-0"	4 1/8"	1'-6"				9	24"	60'
	64'	CMT-15-64-730	2'-3 3/4"	1'-0"	4 1/8"	1'-6"				14	36"	93'
	94'	CMT-15-94-730	2'-3 3/4"	1'-0"	4 1/8"	1'-6"				19	54"	126'
	124'	CMT-15-124-730	2'-3 3/4"	1'-0"	4 1/8"	1'-6"				24	70"	159'
20'	34'	CMT-20-34-730	2'-3 3/4"	1'-0"	4 1/8"	1'-6"				11	24"	66'
	64'	CMT-20-64-730	2'-3 3/4"	1'-0"	4 1/8"	1'-6"				16	36"	99'
	94'	CMT-20-94-730	2'-3 3/4"	1'-0"	4 1/8"	1'-6"				21	54"	132'
	124'	CMT-20-124-730	2'-3 3/4"	1'-0"	4 1/8"	1'-6"				26	70"	165'
23'	34'	CMT-23-34-730	2'-3 3/4"	1'-0"	4 1/8"	1'-6"				12	24"	69'
	64'	CMT-23-64-730	2'-3 3/4"	1'-0"	4 1/8"	1'-6"				17	36"	102'
	94'	CMT-23-94-730	2'-3 3/4"	1'-0"	4 1/8"	1'-6"				22	54"	135'
	124'	CMT-23-124-730	2'-3 3/4"	1'-0"	4 1/8"	1'-6"				27	70"	168'
28'	34'	CMT-28-34-730	2'-5 5/8"	1'-4"	4 1/8"	1'-6"				13	24"	75'
	64'	CMT-28-64-730	2'-5 5/8"	1'-4"	4 1/8"	1'-6"				18	36"	108'
	94'	CMT-28-94-730	2'-5 5/8"	1'-4"	4 1/8"	1'-6"				23	54"	141'
	124'	CMT-28-124-730	2'-5 5/8"	1'-4"	4 1/8"	1'-6"				28	70"	174'
34'	34'	CMT-34-34-730	2'-5 5/8"	1'-6"	4 1/8"	1'-6"				16	24"	81'
	64'	CMT-34-64-730	2'-5 5/8"	1'-6"	4 1/8"	1'-6"				21	36"	114'
	94'	CMT-34-94-730	2'-5 5/8"	1'-6"	4 1/8"	1'-6"				26	54"	147'
	124'	CMT-34-124-730	2'-5 5/8"	1'-6"	4 1/8"	1'-6"				31	70"	180'

30' - 0" MAXIMUM SUPPORT CENTER
2,000 LB. CAPACITY

30' - 0" MAXIMUM SUPPORT CENTERS

8' - 10' - 15' - 20' - 23' - 28' - 34' BRIDGE LENGTH



